



西门子电机(中国)有限公司  
Siemens Standard Motors Ltd.

SIEMENS



西门子电机(中国)有限公司  
地址: 江苏省仪征市青山镇西街110号  
电话: 0514-85718093  
传真: 0514-85718083  
邮编: 211417  
网址: //www.beide-motor.cn  
邮箱: beide-motor.ssm1@siemens.com

Siemens Standard Motors Ltd.  
Add: 110West street, Qingshan Town, Yizheng City, Jiangsu, Prov  
Tel: 0514-85718093  
Fax: 0514-85718083  
Zip: 211417  
http: //www.beide-motor.cn  
E-mail: beide-motor.ssm1@siemens.com

西门子电机(中国)有限公司版权所有  
如有改动, 恕不事先通知。

产品样本 Catalog 2008.01

## 公司概况 Company Profile



西门子电机（中国）有限公司是西门子（中国）有限公司与江苏贝得电机股份有限公司合资建立的生产中小型低压电机产品的基地。

公司于2006年3月正式运营，将致力于研发和生产具有广泛应用的技术先进的中小型贝得牌电机产品供应中国市场。主要产品有符合国际IEC标准的三相异步电机及其派生的防爆、调速、制动和变速多级等系列交流电机产品。

公司将秉承西门子工业自动化与驱动技术集团的尖端技术和江苏贝得电机股份有限公司完善的生产线，采用具有西门子特色的现代化管理模式，严格按照国际标准ISO9001:2000实施全面质量管理。

公司本着不断创新，为客户创造价值的宗旨，竭诚为广大客户提供优质的产品和服务。

Siemens Standard Motors Ltd. (SSML) is a joint venture production base for a comprehensive range of small and medium size low-voltage motors owned by Siemens Ltd., China and Jiangsu Beide Electrical Machinery Corporation.

SSML started operation from March 2006. Now it will focus on the development and manufacture of a comprehensive range of small and medium size low-voltage motors for the local Chinese market.

The main products are three phase asynchronous motors for general purpose and their sub-series such as explosion-proof motors, variable speed motors, brake motors and multi-speed motor according to IEC standard.

SSML will combine the strengths of the both companies, namely the state-of-the-art technology of Siemens' comprehensive product, system and solution offering and the well established production line of Jiangsu Beide Electrical Machinery Corporation, adopt the modern management mode with Siemens characteristic, and implement the comprehensive quality processed according to ISO9001 2000. By following our principle that continuous development and creates customer's value with innovative products, SSML will continuously serve all customers with high quality products and good service.



SIEMENS



总经理致辞 The Words from GM	1
公司结构 Company Organization	2
公司荣誉 Company Honor	3
质量方针 Quality Guideline	4
Y2系列三相异步电动机 Y2 Series Three-Phase Asynchronous Motors	5
YVF2系列变频调速电动机 YVF2 Series Variable Speed Motors	9
YB2系列隔爆型三相异步电动机 YB2 Series Explosion-Proof Three-Phase Asynchronous Motors	11
YCT系列电磁调速异步电动机 YCT Series Electromagnetic Speed Control Asynchronous Motors	14
YD系列变极多速三相异步电动机 YD Series Change-Poles Multi-Speed Asynchronous Motors	17
YEJ系列电磁制动三相异步电动机 YEJ Series Electromagnetic Brake Three-Phase Asynchronous Motors	19



### 总经理致辞:

尊敬的客户,

三年多的运作验证了西门子电机(中国)有限公司卓越的功能性、杰出的质量和公平的价格。

我们的宗旨是“与客户零距离”并以西门子的道德准则引领我们进入未来。

西门子电机(中国)有限公司有着不断创新的产品以及高技术水准的服务,对扩大我们客户的增值空间给予了强大支持。

期待与您的合作。

诚挚的  
根特·华德  
西门子电机(中国)有限公司 总经理

### The words from GM:

Dear customers,

more than 3 years of operation have proven SSML's commitment to high functionality, outstanding quality and fair prices.

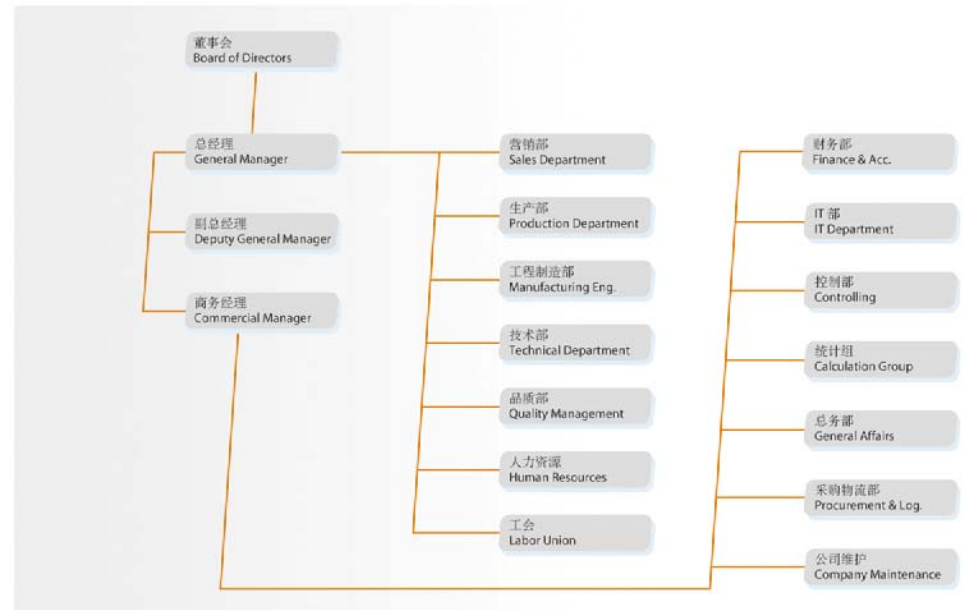
Our principles "Zero distance to the customer" and full compliance with Siemens' ethic rules will us guide into the future.

With innovative products and state-of-the-art services SSML will enlarge the offering to increase the value-add to you, our customers.

Looking forward to cooperating with you.

Yours sincerely  
Guenther Prade  
SSML GM

### 公司结构 Company Organization





## 产品证书

## Company Certificates



## 质量方针

## Quality Guideline

1. 让顾客满意 Customer satisfaction
  - 顾客满意是公司发展的基础。  
Customer satisfaction is the bases of our company's developments.
  - 向顾客提供一流的产品、服务和最高回报。  
Offer to our customer products and service of outstanding quality and the highest value.
2. 创造员工价值 Creating the value for employee
  - 员工是公司的重要财富和维持公司发展的生力军。  
Employees are the Company's main resource and vital strength.
  - 每个员工的工作直接影响我们的产品和服务质量。  
The efforts of every employee are directed towards active contribution to the quality of our products and services.
  - 我们将通过培训来提高员工的劳动技能和工作方法。发挥他们的创造性和主观能动性。  
We seek to develop their skills and performances through a training policy.
3. 持续改进 Continuous improvement
  - 持续改进是我们永恒的主题。不断地改进流程、不断增强我们的竞争力。  
Continuous improvement is our eternal pursuit Constantly improving our competitiveness and processes.
4. 安全与环境保护 Safety and environment protection
  - 公司的安全和环境的保护是一个有关社会公德的问题，它直接影响到我们在公众心目中的形象。  
Concern for safety on Company premises and protection of the environment are a question of corporate ethics and play a vital role in how we are perceived by the public.



## Y2系列三相异步电动机

### 概述

Y2系列三相异步电动机具有结构新颖、造型美观、噪音低、振动小、绝缘等级高等特点，产品现已达到九十年代国际先进水平，是Y系列电机的更新产品。外壳防护等级IP54。在海拔不超过1000m，环境温度不超过40°C时，电动机能额定运行。

额定功率：0.55-315kW      额定电压：380V  
 额定频率：50Hz              绝缘等级：F  
 机座号：80-355

### Y2 Series Three-Phase Asynchronous Motors Brief introduction

Y2 Series three-phase asynchronous motors offer such characteristics as new structure, modern model, low noise level and vibration, high insulation class. These motors have come up to advanced world standards of 90s. They are the replacement of Y series. The degree of protection is IP54. A coolant temperature less than 40°C and a site altitude of up to 1000m above sea level, the motors can operate constantly.

Rated output: 0.55-315kW      Rated voltage: 380V  
 Rated frequency: 50Hz          Insulation class: F  
 Motor size with shaft height: 80-355

### 安装型式 Mounting type

示意图 Diagram															
安装型式(M) Mounting type(M)	B3	B5	B35	V1	V3	V5	V6	B6	B7	B8	V15	V36	B14	B34	V18
机座号 Motor size	80-355			80-280/80-355			80-355			80-160			80-112		

### 安装尺寸(带螺孔) Dimensions of mounting with screw

机座号 Motor size	M	N	P	S	T
80M	100	80	120	M6	3
90S	115	95	140	M8	3
90L	115	95	140	M8	3
100L	130	110	160	M8	3.5
112M	130	110	160	M8	3.5

### 技术数据 Technical data

型号 Type	额定功率(kW) Rated output	额定电流(A) Rated current	额定转速(r/min) Rated speed	满载时效率 Efficiency η%	满载时功率因数 Power factor cosφ	堵转电流/额定电流 Locked current /rated current	堵转转矩/额定转矩 Locked torque /rated torque	最大转矩/额定转矩 Max torque /rated torque	空载噪声 dBA No load noise	振动(mm/s) Vibration	重量(kg) Weight
Y2-80M1-2	0.75	1.83	2845	75.0	0.83	6.1	2.2	2.3	67	1.8	14
Y2-80M2-2	1.1	2.58	2840	77.0	0.84	7	2.2	2.3	67	1.8	15
Y2-80M1-4	0.55	1.57	1390	71.0	0.75	5.2	2.4	2.3	58	1.8	14
Y2-80M2-4	0.75	2.05	1380	73.0	0.75	6	2.3	2.3	58	1.8	15
Y2-80M2-6	0.55	1.79	885	65.0	0.72	4.7	1.9	2.1	54	1.8	16
Y2-90S-2	1.5	3.43	2840	79.0	0.84	7	2.2	2.3	72	1.8	22
Y2-90L-2	2.2	4.85	2840	81.0	0.85	7	2.2	2.3	72	1.8	24
Y2-90S-4	1.1	2.85	1390	76.2	0.77	6	2.3	2.3	61	1.8	21
Y2-90L-4	1.5	3.67	1390	78.5	0.79	6	2.3	2.3	61	1.8	23
Y2-90S-6	0.75	2.29	910	69.0	0.72	5.5	2	2.1	57	1.8	20
Y2-90L-6	1.1	3.18	910	72.0	0.73	5.5	2	2.1	57	1.8	23
Y2-100L-2	3	6.31	2860	83.0	0.87	7.5	2.2	2.3	76	1.8	33
Y2-100L1-4	2.2	5.09	1410	81.0	0.81	7	2.3	2.3	64	1.8	31
Y2-100L2-4	3	6.73	1410	82.6	0.82	7	2.3	2.3	64	1.8	33
Y2-100L-6	1.5	4.0	920	76.0	0.75	5.5	2	2.1	61	1.8	31
Y2-112M-2	4	8.1	2880	85.0	0.88	7.5	2.2	2.3	77	1.8	38
Y2-112M-4	4	8.8	1435	84.2	0.82	7	2.3	2.3	65	1.8	44
Y2-112M-6	2.2	5.6	935	79.0	0.76	6.5	2	2.1	65	1.8	40
Y2-112M-8	1.5	4.4	690	75.0	0.69	5	1.8	2	61	1.8	40
Y2-132S1-2	5.5	11.0	2900	86.0	0.88	7.5	2.2	2.3	80	1.8	58
Y2-132S2-2	7.5	14.9	2900	87.0	0.88	7.5	2.2	2.3	80	1.8	63
Y2-132S-4	5.5	11.7	1440	85.7	0.83	7	2.3	2.3	71	1.8	61
Y2-132M-4	7.5	15.6	1440	87.0	0.84	7	2.3	2.3	71	1.8	71
Y2-132S-6	3	7.4	960	81.0	0.76	6.5	2.1	2.1	69	1.8	56
Y2-132M1-6	4	9.8	960	82.0	0.76	6.5	2.1	2.1	69	1.8	68
Y2-132M2-6	5.5	12.9	960	84.0	0.77	6.5	2.1	2.1	69	1.8	75
Y2-132S-8	2.2	6.0	705	78.0	0.71	6	1.8	2	64	1.8	55
Y2-132M-8	3	7.9	705	79.0	0.73	6	1.8	2	64	1.8	66
Y2-160M1-2	11	21.2	2930	88.4	0.89	7.5	2.2	2.3	86	2.8	105
Y2-160M2-2	15	28.6	2930	89.4	0.89	7.5	2.2	2.3	86	2.8	115
Y2-160L-2	18.5	34.7	2930	90.0	0.90	7.5	2.2	2.3	86	2.8	128
Y2-160M-4	11	22.5	1460	88.4	0.84	7	2.2	2.3	75	2.8	110
Y2-160L-4	15	30.0	1460	89.4	0.85	7.5	2.2	2.3	75	2.8	132
Y2-160M-6	7.5	17.2	970	86.0	0.77	6.5	2	2.1	73	2.8	104
Y2-160L-6	11	24.5	970	87.5	0.78	6.5	2	2.1	73	2.8	127
Y2-160M1-8	4	10.3	720	81.0	0.73	6	1.9	2	68	2.8	92
Y2-160M2-8	5.5	13.6	720	83.0	0.74	6	2	2	68	2.8	103
Y2-160L-8	7.5	17.8	720	85.5	0.75	6	2	2	68	2.8	125
Y2-180M-2	22	41.0	2940	90.5	0.90	7.5	2	2.3	89	2.8	165
Y2-180M-4	18.5	36.1	1470	90.5	0.86	7.5	2.2	2.3	76	2.8	164
Y2-180L-4	22	42.7	1470	91.0	0.86	7.5	2.2	2.3	76	2.8	180
Y2-180L-6	15	31.6	970	89.0	0.81	7	2	2.1	73	2.8	167
Y2-180L-8	11	25.1	730	87.5	0.76	6.6	2	2	70	2.8	170
Y2-200L1-2	30	55.4	2950	91.4	0.90	7.5	2	2.3	92	2.8	225
Y2-200L2-2	37	67.9	2950	92.0	0.90	7.5	2	2.3	92	2.8	246
Y2-200L-4	30	57.6	1470	92.0	0.86	7.2	2.2	2.3	79	2.8	225
Y2-200L1-6	18.5	38.6	980	90.0	0.81	7	2.1	2.1	76	2.8	210
Y2-200L2-6	22	44.7	980	90.0	0.83	7	2.1	2.1	76	2.8	223
Y2-200L-8	15	34.1	730	88.0	0.76	6.6	2	2	73	2.8	220
Y2-225M-2	45	82.1	2960	92.5	0.90	7.5	2	2.3	92	2.8	296
Y2-225S-4	37	69.9	1475	92.5	0.87	7.2	2.2	2.3	81	2.8	285





## YVF2系列变频调速专用三相异步电动机

### 概述

YVF2系列变频调速专用三相异步电动机是一种交流、高效、节能型调速电动机，可与国内外变频器配套使用，该产品运行可靠、维护方便。电机单独装有轴流风机，在不同转速下均有较好的冷却效果。电机的功率、安装尺寸和外形与Y2系列（IP54）三相异步电动机相同（除风罩比Y2系列电机稍长即电机总长增加）。可广泛用于轻工、纺织、化工、冶金、机床行业等需要调节转速的设备中。在海拔不超过1000m，环境温度不超过40℃时，电动机能额定运行。

额定功率：0.55-280kW

额定电压：380V

防护等级：IP54

绝缘等级：F

机座号：80-355

### YVF2 Series Variable Speed Motors

#### Brief introduction

YVF2 Series Variable Speed Motors are AC high-efficiency, energy saving motors. It can be configured with the frequency converter from domestic and abroad. It has the characteristics with reliable operation and easy maintenance. Separate axial-flow ventilator is installed, YVF2 series motors can guarantee a better cooling effect in different speed. The power, mounting dimensions and outline are same as Y2 series motors except for long fan cover. YVF2 series motors can be widely applied to the equipment which need speed control in light industry, textile, chemical, metallurgy and machine tool industries etc. A coolant temperature less than 40°C and a site altitude of up to 1000m above sea level, the motors can operate constantly.

Rated output: 0.55-280kW

Rated voltage: 380V

Protection class: IP54

Insulation class: F

Motor size with shaft height: 80-355

安装型式：同Y2系列三相异步电动机 **Mounting type: same as Y2 series**

### 技术数据 Technical data

标称功率 Power (kW)	型号 Type	额定转矩 Rated torque(N.m)	电流 Current (A)	型号 Type	额定转矩 Rated torque(N.m)	电流 Current (A)	型号 Type	额定转矩 Rated torque(N.m)	电流 Current (A)	型号 Type	额定转矩 Rated torque(N.m)	电流 Current (A)	匹配变频器容量 Power of suited converter (kVA)
0.55				YVF2-80M1-4	3.5	1.6	YVF2-80M2-6	5.3	1.8				1.0
0.75	YVF2-80M1-2	2.4	1.8	YVF2-80M2-4	4.7	2.0	YVF2-90S-6	7.2	2.3				1.0
1.1	YVF2-80M2-2	3.5	2.6	YVF2-90S-4	7.0	2.9	YVF2-90L-6	10.5	3.2				2.0
1.5	YVF2-90S-2	4.8	3.5	YVF2-90L-4	9.5	3.8	YVF2-100L-6	14.3	4.6				2.0
2.2	YVF2-90L-2	7.0	4.9	YVF2-100L1-4	14.0	5.2	YVF2-112M-6	21.0	5.7	YVF2-132S-8	28.0	6.1	3.0
3	YVF2-100L-2	9.6	6.4	YVF2-100L2-4	19.0	7.0	YVF2-132S-6	28.6	7.0	YVF2-132M-8	38.2	8	4.0
4	YVF2-112M-2	12.7	8.2	YVF2-112M-4	25.4	9.3	YVF2-132M1-6	38.2	9.1	YVF2-160M1-8	51	10.4	6.0
5.5	YVF2-132S1-2	17.5	11.1	YVF2-132S-4	35.0	12.0	YVF2-132M2-6	52.5	12.5	YVF2-160M2-8	70	13.8	10
7.5	YVF2-132S2-2	23.9	15.0	YVF2-132M-4	47.7	15.5	YVF2-160M-6	71.6	17	YVF2-160L-8	95.5	18	10
11	YVF2-160M1-2	35.0	21.4	YVF2-160M-4	70.0	22.5	YVF2-160L-6	105.0	24	YVF2-180L-8	140	25.4	15
15	YVF2-160M2-2	47.8	29	YVF2-160L-4	95.5	31.0	YVF2-180L-6	143.3	30	YVF2-200L-8	191	34.4	20
18.5	YVF2-160L-2	59	35	YVF2-180M-4	117.8	36.5	YVF2-200L1-6	176.7	37	YVF2-225S-8	235.6	41.5	30
22	YVF2-180M-2	70	41.4	YVF2-180L-4	140.0	43.5	YVF2-200L2-6	210.0	45	YVF2-225M-8	280	47.8	30
30	YVF2-200L1-2	95.5	56	YVF2-200L-4	191.0	58	YVF2-225M-6	286.5	58	YVF2-250M-8	382	64	40
37	YVF2-200L2-2	117.8	68.5	YVF2-225S-4	235.5	70	YVF2-250M-6	353.4	71	YVF2-280S-8	471	78.5	50
45	YVF2-225M-2	143.3	82.8	YVF2-225M-4	286.4	85	YVF2-280S-6	429.7	86	YVF2-280M-8	573	95	60
55	YVF2-250M-2	175	100.7	YVF2-250M-4	350.1	103	YVF2-280M-6	525.2	105	YVF2-315S-8	700.3	113	70
75	YVF2-280S-2	238.8	136.4	YVF2-280S-4	477.7	140	YVF2-315S-6	716	141	YVF2-315M-8	955	153	100
90	YVF2-280M-2	286.5	161.4	YVF2-280M-4	573	167	YVF2-315M-6	860	170	YVF2-315L1-8	1146	180	120
110	YVF2-315S-2	350.1	197	YVF2-315S-4	700.2	201	YVF2-315L1-6	1050	206	YVF2-315L2-8	1400.7	219	150
132	YVF2-315M-2	420.2	235	YVF2-315M-4	840.3	240	YVF2-315L2-6	1260	249				180
160	YVF2-315L1-2	509.3	282	YVF2-315L1-4	1018.5	287	YVF2-355M1-6	1528	301				210
185				YVF2-315L-4	1177.7	332	YVF2-355M2-6	1766.8	347				220
200	YVF2-315L2-2	636.7	352	YVF2-315L2-4	1273.2	359	YVF2-355M3-6	1910	375				270
220				YVF2-355M1-4	1400.7	403	YVF2-355L1-6	2101	412				280
250				YVF2-355M2-4	1591.7	462							350
280				YVF2-355L1-4	1782.7	516							400

### 长度尺寸 Length

机座号 Motor size	80M	90S	90L	100L	112M	132S	132M	160M	160L	180M
长度 Length	370	380	410	465	480	530	570	660	715	775
机座号 Motor size	180L	200L	225S	225M	250M	280S	280M	315S	315	355
长度 Length	815	850	885	920	985	1095	1145	1300	1410	1615



## YB2系列隔爆型三相异步电动机

### 概述

YB2系列隔爆型三相异步电动机,具有效率高、噪音低、振动小、起动性能好、运行可靠等特点。额定电压为380、660、380/660V,额定频率50Hz。本系列电机的功率等级、安装尺寸符合国际电工委员会(IEC)标准,其外壳防护等级为IP55,冷却方法为IC411,采用F级绝缘,可在海拔不超过1000m,温度不超过40°C的环境下连续运行。

机座号: 80-355

额定功率: 0.55-315kW

防爆标志: ExdI, ExdIIAT4, ExdIIBT4

本系列电动机的防爆性能符合GB3836.2-2000《爆炸性气体环境用电气设备第2部分隔爆型“d”》的规定,也符合国际电工委员会(IEC)标准的规定,制成隔爆型,适用于爆炸性气体混合物存在的场所。

### YB2 Series Explosion-Proof three-Phase Asynchronous Motors

#### Brief introduction

YB2 series explosion-proof three-phase asynchronous motors have such characteristics as high efficiency, low noise level and vibration, high startup torque and operation. The rated voltage is 380V, 660V, 380V/660V. The rated frequency is 50Hz. The power grade and mounting dimensions of the motors are according with IEC standard. The degree of its outside shell protection is IP55, and cooling form is IC411, class F insulation is adopted. They can operate constantly at the environmental temperature of not higher than 40°C, and a site altitude of up to 1000m above sea level.

Motor size with shaft height: 80-355

Rated output: 0.55-315kW

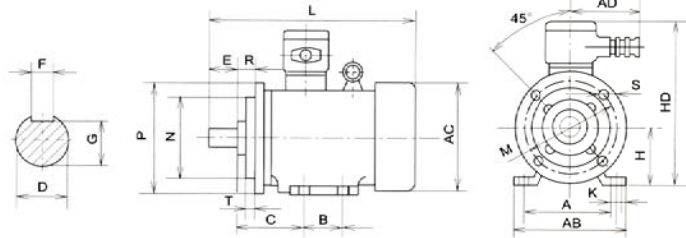
Explosion protection marking: ExdI, ExdIIAT4, ExdIIBT4.

The explosion protection performance of the motors comply with GB3836.1-2000 "Electrical apparatus for explosive atmosphere General requirements" and GB3836.2-2000 "Electrical apparatus for explosive atmospheres, explosion-proof electrical apparatus "d" and also comply with IEC standard. It is used in the places where the explosive the gas mixture is existing.

规格表 Specification table

型号 Type	功率(kW) Power	型号 Type	功率(kW) Power	型号 Type	功率(kW) Power	型号 Type	功率(kW) Power
YB2-80M1-2	0.75	YB2-132M-8	3	YB2-225M-8	22	YB2-315L1-6	110
YB2-80M1-4	0.55	YB2-160M1-2	11	YB2-250M-2	55	YB2-315L2-6	132
YB2-80M2-2	1.1	YB2-160M2-2	15	YB2-250M-4	55	YB2-315L1-8	90
YB2-80M2-4	0.75	YB2-160M-4	11	YB2-250M-6	37	YB2-315L2-8	110
YB2-80M2-6	0.55	YB2-160M-6	7.5	YB2-250M-8	30	YB2-315L1-10	75
YB2-90S-2	1.5	YB2-160M1-8	4	YB2-280S-2	75	YB2-315L2-10	90
YB2-90S-4	1.1	YB2-160M2-8	5.5	YB2-280S-4	75	YB2-355M1-2	220
YB2-90S-6	0.75	YB2-160L-2	18.5	YB2-280S-6	45	YB2-355M2-2	250
YB2-90L-2	2.2	YB2-160L-4	15	YB2-280S-8	37	YB2-355L1-2	280
YB2-90L-4	1.5	YB2-160L-6	11	YB2-280M-2	90	YB2-355L2-2	315
YB2-90L-6	1.1	YB2-160L-8	7.5	YB2-280M-4	90	YB2-355M1-4	220
YB2-100L-2	3	YB2-180M-2	22	YB2-280M-6	55	YB2-355M2-4	250
YB2-100L1-4	2.2	YB2-180M-4	18.5	YB2-280M-8	45	YB2-355L1-4	280
YB2-100L2-4	3	YB2-180L-4	22	YB2-315S-2	110	YB2-355L2-4	315
YB2-100L-6	1.5	YB2-180L-6	15	YB2-315S-4	110	YB2-355S-6	160
YB2-112M-2	4	YB2-180L-8	11	YB2-315S-6	75	YB2-355M1-6	185
YB2-112M-4	4	YB2-200L1-2	30	YB2-315S-8	55	YB2-355M1-8	200
YB2-112M-6	2.2	YB2-200L2-2	37	YB2-315S-10	45	YB2-355L1-6	220
YB2-112M-8	1.5	YB2-200L-4	30	YB2-315M-2	132	YB2-355L2-6	250
YB2-132S1-2	5.5	YB2-200L1-6	18.5	YB2-315M-4	132	YB2-355S-8	132
YB2-132S2-2	7.5	YB2-200L2-6	22	YB2-315M-6	90	YB2-355M-8	160
YB2-132S-4	5.5	YB2-200L-8	15	YB2-315M-8	75	YB2-355L1-8	185
YB2-132S-6	3	YB2-225S-4	37	YB2-315M-10	55	YB2-355L2-8	200
YB2-132S-8	2.2	YB2-225S-8	18.5	YB2-315L1-2	160	YB2-355S-10	90
YB2-132M-4	7.5	YB2-225M-2	45	YB2-315L2-2	200	YB2-355M1-10	110
YB2-132M1-6	4	YB2-225M-4	45	YB2-315L1-4	160	YB2-355M2-10	132
YB2-132M2-6	5.5	YB2-225M-6	30	YB2-315L2-4	200		





安装及外形尺寸 Dimensions of mounting and outline

机座号 Motor size	极数 Poles	安装尺寸(mm) Mounting Dimensions													外形尺寸(mm) Outline Dimensions							
		A	B	C	D	E	F	G	H	K	M	N	P	R	S	T	凸缘孔数	AB	AC	AD	HD	L
80M	125	100	50	19	40	6	15.5	80	10	165	130	200	0	12	3.5	4	165	165	180	320	330	
90S	140	100	56	24	50	8	20	90	10	165	130	200	0	12	3.5	4	180	180	180	350	360	
90L	140	125	56	24	50	8	20	90	10	165	130	200	0	12	3.5	4	180	180	180	350	385	
100L	160	140	63	28	60	8	24	100	12	215	180	250	0	15	4	4	200	205	180	400	440	
112M	190	140	70	28	60	8	24	112	12	215	180	250	0	15	4	4	245	230	200	420	460	
132S	216	140	89	38	80	10	33	132	12	265	230	300	0	15	4	4	280	270	200	450	510	
132M	216	178	89	38	80	10	33	132	12	265	230	300	0	15	4	4	280	270	200	450	550	
160M	254	210	108	42	110	12	37	160	15	300	250	350	0	19	5	4	330	325	220	520	670	
160L	254	254	108	42	110	12	37	160	15	300	250	350	0	19	5	4	330	325	220	520	710	
180M	279	241	121	48	110	14	42.5	180	15	300	250	350	0	19	5	4	355	360	220	550	730	
180L	279	279	121	48	110	14	42.5	180	15	300	250	350	0	19	5	4	355	360	220	550	750	
200L	318	305	133	55	110	16	49	200	19	350	300	400	0	19	5	4	390	400	250	645	805	
225S	4.8	356	286	149	60	140	18	53	225	19	400	350	450	0	19	5	8	435	450	250	690	865
225M	2	356	311	149	55	110	16	49	225	19	400	350	450	0	19	5	8	435	450	250	690	860
	4.6,8	356	311	149	60	140	18	53	225	19	400	350	450	0	19	5	8	435	450	250	690	890
250M	2	406	349	168	60	140	18	53	250	24	500	450	550	0	19	5	8	490	500	300	730	945
	4.6,8	406	349	168	65	140	18	58	250	24	500	450	550	0	19	5	8	490	500	300	730	945
280S	2	457	368	190	65	140	18	58	280	24	500	450	550	0	19	5	8	545	565	300	810	1010
	4.6,8	457	368	190	75	140	20	67.5	280	24	500	450	550	0	19	5	8	545	565	300	810	1010
280M	2	457	419	190	65	140	18	58	280	24	500	450	550	0	19	5	8	545	565	300	810	1060
	4.6,8	457	419	190	75	140	20	67.5	280	24	500	450	550	0	19	5	8	545	565	300	810	1060
315S	2	508	406	216	65	140	18	58	315	28	600	550	660	0	24	6	8	640	630	350	960	1220
	4.6,8,10	508	406	216	80	170	22	71	315	28	600	550	660	0	24	6	8	640	630	350	960	1250
315M	2	508	457	216	65	140	18	58	315	28	600	550	660	0	24	6	8	640	630	350	960	1390
	4.6,8,10	508	457	216	80	170	22	71	315	28	600	550	660	0	24	6	8	640	630	350	960	1420
315L	2	508	508	216	65	140	18	58	315	28	600	550	660	0	24	6	8	640	630	350	960	1390
	4.6,8,10	508	508	216	80	170	22	71	315	28	600	550	660	0	24	6	8	640	630	350	960	1420
355S	6,8,10	610	500	254	95	170	25	86	355	28	740	680	800	0	24	6	8	760	710	350	1060	1350
355M	2	610	560	254	75	140	20	67.5	355	28	740	680	800	0	24	6	8	760	710	350	1060	1500
	4.6,8,10	610	560	254	95	170	25	86	355	28	740	680	800	0	24	6	8	760	710	350	1060	1530
355L	2	610	630	254	75	140	20	67.5	355	28	740	680	800	0	24	6	8	760	710	350	1060	1500
	4.6,8,10	610	630	254	95	170	25	86	355	28	740	680	800	0	24	6	8	760	710	350	1060	1530

注:  
1.图为B35型电机,机座带底脚,端盖上有凸缘;  
2.85型机座带底脚,端盖上有凸缘,无尺寸M、N、P、R、S、T;  
3.85型机座无底脚,端盖上有凸缘,无尺寸A、B、C、AB;  
4.H225-H355电机凸缘安装孔S为8孔均匀;  
5.R为凸缘配合面至轴伸端的距离。

Note:  
1.The drawing is B35 type,There have housing feet and flange on end shield.  
2.85 type motors have frame feet but no flange,the dimensions have no M、N、P、R、S、T,  
3.85 type motors have flange but no frame feet,the dimensions have no A、B、C、AB,  
4.There are eight symmetrical distributed holes for flange mounting on the H225-H355 motors.  
5.R is the distance from the flange to the drive shaft end.

## YCT系列电磁调速电动机

### 概述

YCT系列电磁调速电动机,是一种交流恒转矩调速电机,是通过可控硅控制而达到均匀无级调速的。

YCT系列电机具有速度负反馈自动调节系统,速度变化率低于3%;无失控区,调速范围广,最大可达10:1;控制功率小,便于自控、群控、遥控;启动性能好,启动转矩大,启动平滑,使用维护方便等特点。在海拔不超过1000m,环境温度空气温度不超过40°C时,电动机能额定运行。

### YCT Series Electromagnetic Speed Control Asynchronous motors

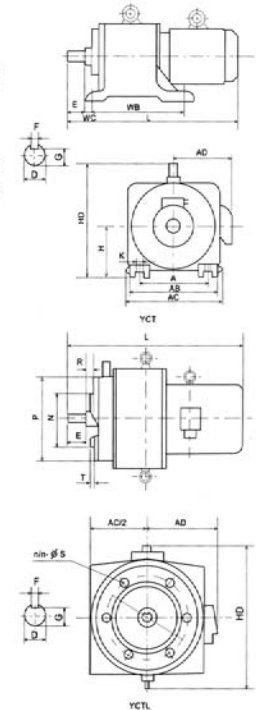
#### Brief introduction

YCT series electromagnetic speed control asynchronous motors are the AC constant torque speed control motors and the even stepless speed control can be obtained through the SCR controller.

YCT series motors have the automatic speed control systems of speed negative feedback,the rate of speed changes is less than3%;no speed area is out of control;wide range of the speed control,the maximum speed control range is 10:1;small control power,easy in self control, collected control and remote control;good in starting performance,large in startup torque, smooth in starting, easy in use and maintenance.A coolant temperature less than 40°C and a site altitude of up to 1000m above sea level, the motors can operate constantly.

### 安装型式 Mounting type

YCT	IMB3
YCTL	IMV1 IMV3 IMB5(112-200) IMV1(225-250)



技术数据 Technical data

型号 Type	标称功率 Nominal power(kW)	额定转矩 Rated torque(N.m)	额定转速范围 Speed range(r/min)
YCT 112-4A	0.55	3.6	1230-125
YCTL			
YCT 112-4B	0.75	4.9	1230-125
YCTL			
YCT 132-4A	1.1	7.1	1230-125
YCTL			
YCT 132-4B	1.5	9.7	1230-125
YCTL			
YCT 160-4A	2.2	14.1	1250-125
YCTL			
YCT 160-4B	3	19.2	1250-125
YCTL			
YCT 180-4A	4	25.2	1250-125
YCTL			
YCT 200-4A	5.5	36.1	1250-125
YCTL			
YCT 200-4B	7.5	47.7	1250-125
YCTL			
YCT 225-4A	11	69	1250-125
YCTL			
YCT 225-4B	15	94	1250-125
YCTL			
YCT 250-4A	18.5	110	1320-132
YCTL			
YCT 250-4B	22	137	1320-132
YCTL			
YCT 280-4A	30	189	1320-132
YCTL			
YCT 315-4A	37	232	1320-132
YCTL			
YCT 315-4B	45	282	1320-132
YCTL			
YCT 355-4A	55	344	1340-440
YCTL			
YCT 355-4B	75	469	1340-440
YCTL			
YCT 355-4C	90	564	1340-600
YCTL			

安装及外形尺寸 Dimensions of mounting and Outline

机座号 Motor size	安装尺寸(mm) Mounting Dimensions											外形尺寸(mm) Outline Dimensions			
	A	WB	WC	E	H	D	F	G	K	AB	AD	AC	HD	L	
112-4A	190	210	40	40	112	19	6	15.5	12	240	150	260	280	520	
-4B															
132-4A	216	241	40	50	132	24	8	20	12	285	165	310	330	570	
-4B														585	
160-4A	254	267	45	60	160	28	8	24	15	330	185	350	385	665	
-4B															
180-4A	279	305	45	60	180	28	8	24	15	365	195	385	430	700	
200-4A	318	356	50	80	200	38	10	33	19	410	235	430	485	820	
-4B														860	
225-4A	356	406	56	110	225	42	12	37	19	465	270	485	545	980	
-4B														1025	
250-4A	406	457	63	110	250	48	14	42.5	24	520	295	540	595	1130	
-4B														1170	
280-4A	457	508	70	110	280	55	16	49	24	575	320	595	665	1280	
315-4A	508	560	89	140	315	60	18	53	28	645	345	670	770	1400	
-4B														1425	
355-4A	610	630	108	140	355	65	18	58	28	755	390	780	890	1550	
-4B						75	20	67.5			420			1630	
-4C						75	20	67.5			420			1680	



## YD系列变极多速三相异步电动机

### 概述

YD系列变极多速三相异步电动机,外形及安装尺寸、绝缘等级、防护等级、冷却方法、结构及安装型式、使用条件、额定电压、额定频率等与Y系列(IP44)电动机相同,适用于需要逐级调速的各种传动机构。在海拔不超过1000m,环境空气温度不超过40°C时,电动机能额定运行。

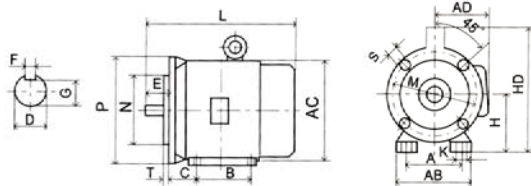
### YD Series Change-Poles Multi-Speed Asynchronous Motors

#### Brief introduction

YD series change-poles multi-speed three-phase asynchronous motors, the dimensions of mounting and outline, insulation class, protection degree, cooling method, structure and mounting type, using condition, rated voltage and rated frequency of the motors are all same as Y series (IP44) motors, they can apply to various transmission mechanism which need control speed step by step. A coolant temperature less than 40°C and a site altitude of up to 1000m above sea level, the motors can operate constantly.

#### 安装型式 Mounting type

示意图 Diagram												
安装型式(IM) Mounting type(IM)	B3	B5	B35	V1	V3	V5	V6	B6	B7	B8	V15	V36
机座号 Motor size	80-280	80-225	80-280	80-280	80-160							



### 规格表 Specification table

型号 Type	同步转速 Synchronous speed(r/min)			
	1500/3000	1000/1500	750/1500	500/1000
	极数 poles			
	4/2	6/4	8/4	12/6
功率 Power(kW)				
YD801	0.45/0.55			
YD802	0.55/0.75			
YD905	0.85/1.1		0.65/0.85	
YD90L	1.3/1.8	0.85/1.1		0.45/0.75
YD100L1	2/2.4	1.3/1.8		0.85/1.5
YD100L2	2.4/3	1.5/2.2		
YD112M	3.3/4	2.2/2.8		1.5/2.4
YD132S	4.5/5.5	3/4	2.2/3.3	
YD132M1	6.5/8	4/5.5		3/4.5
YD132M2				
YD160M	9/11	6.5/8	5/7.5	2.6/5
YD160L	11/14	9/11	7/11 3.7/7	
YD180M	15/18.5	11/14		
YD180L	18.5/22	13/16	11/17	5.5/10
YD200L1	26/30	18.5/22	14/22	7.5/13
YD200L2	17/26 9/15			
YD225S	32/37	22/28		
YD225M	37/45	26/32	24/34	12/20
YD250M	45/52	32/42	30/42	15/24
YD280S	42/55		40/55	20/30
YD280M	55/67		47/67	24/37

### 安装及外形尺寸 Dimensions of mounting and Outline

机座号 Motor size	安装尺寸(mm) Mounting Dimensions													外形尺寸(mm) Outline Dimensions						
	H	A	B	C	D	E	F	G	K	M	N	P	R	S	T	AB	AC	AD	HD	L
80	80	125	100	50	19	40	6	15.5	10	165	130	200	0	12	3.5	165	175	150	175	290
90S	90	140	100	56	24	50	8	20	10	165	130	200	0	12	3.5	180	195	160	195	315
90L	90	140	125	56	24	50	8	20	10	165	130	200	0	12	3.5	180	195	160	195	340
100L	100	160	140	63	28	60	8	24	12	215	180	250	0	15	4	205	215	180	245	380
112M	112	190	140	70	28	60	8	24	12	215	180	250	0	15	4	245	240	190	265	400
132S	132	216	140	89	38	80	10	33	12	265	230	300	0	15	4	280	275	210	315	475
132M	132	216	178	89	38	80	10	33	12	265	230	300	0	15	4	280	275	210	315	515
160M	160	254	210	108	42	110	12	37	15	300	250	350	0	19	5	330	335	265	385	610
160L	160	254	254	108	42	110	12	37	15	300	250	350	0	19	5	330	335	265	385	655
180M	180	279	241	121	48	110	14	42.5	15	300	250	350	0	19	5	355	380	285	430	670
180L	180	279	279	121	48	110	14	42.5	15	300	250	350	0	19	5	355	380	285	430	710
200L	200	318	305	133	55	110	16	49	19	350	300	400	0	19	5	395	420	315	475	775
225S	225	356	286	149	60	140	18	53	19	400	350	450	0	19	5	435	475	345	530	820
225M	225	356	311	149	60	140	18	53	19	400	350	450	0	19	5	435	475	345	530	845
250M	250	406	349	168	65	140	18	58	24	500	450	550	0	19	5	490	515	385	575	930
280S	280	457	368	190	75	140	20	67.5	24	500	450	550	0	19	5	550	585	410	640	1000
280M	280	457	419	190	75	140	20	67.5	24	500	450	550	0	19	5	550	585	410	640	1050

#### 注:

1. 图为B35型图样,机座带底脚,端盖上有凸缘。
2. B3型机座带底脚,端盖无凸缘,无尺寸M、N、P、R、S、T。
3. B5型机座无底脚,端盖上有凸缘,无尺寸A、B、C、AB。
4. H225-H355电机凸缘安装孔S为8孔均布。
5. R为凸缘配合面至轴伸出的距离。

#### Note:

1. The drawing is B35 type. There have housing feet and flange on end shield.
2. B3 type motors have frame feet but no flange, the dimensions have no M, N, P, R, S, T.
3. B5 type motors have flange but no frame feet, the dimensions have no A, B, C, AB.
4. There are eight symmetrical distributed holes for flange mounting on the H225-H355 motors.
5. R is the distance from the flange to the drive shaft end.



## YEJ系列电磁制动三相异步电动机

### 概述

YEJ系列电磁制动三相异步电动机,绝缘等级、防护等级、冷却方法、结构与安装型式、使用条件、额定电压、额定频率等与Y系列(IP44)电动机相同,具有附加圆盘型直流电磁制动器,适用于一切要求快速停止、准确定位、往复运转的各种机械。在海拔不超过1000m,环境空气温度不超过40°C时,电动机能额定运行。

制动方式:无励磁制动

电磁制动器额定电压: H100及以下者为直流99V、H112及以上者为直流170V。

### YEJ Series Electromagnetic Brake Three-Phase Asynchronous Motors

#### Brief introduction

YEJ series electromagnetic brake asynchronous motors, the dimensions of mounting and outline, insulation class, protection degree, cooling method, structure and mounting type, using condition, rated voltage and rated frequency of the motors are all same as Y series (IP44) motors with DC electromagnetic brake. They are suitable for all kinds of machines that request rapidly stopping, accurate positioning and reciprocation movement. A coolant temperature less than 40°C and a site altitude of up to 1000m above sea level, the motors can operate constantly.

Braking method: Braking in non-excitation.

Rated voltage of braker: DC99V below motor size 100, DC170V above motor size 112.

安装型式: B3, B5, B6, B7, B8, B35

Mounting type: B3, B5, B6, B7, B8, B35

规格表 Specification table

型号 Type	功率(kW) Power	型号 Type	功率(kW) Power	型号 Type	功率(kW) Power
YEJ801-2	0.75	YEJ90L-4	1.5	YEJ132M1-6	4
YEJ802-2	1.1	YEJ100L1-4	2.2	YEJ132M2-6	5.5
YEJ90S-2	1.5	YEJ100L2-4	3	YEJ160M-6	7.5
YEJ90L-2	2.2	YEJ112M-4	4	YEJ160L-6	11
YEJ100L-2	3	YEJ132S-4	5.5	YEJ180L-6	15
YEJ112M-2	4	YEJ132M-4	7.5	YEJ200L1-6	18.5
YEJ132S1-2	5.5	YEJ160M-4	11	YEJ200L2-6	22
YEJ132S2-2	7.5	YEJ160L-4	15	YEJ225M-6	30
YEJ160M1-2	11	YEJ180M-4	18.5	YEJ132S-8	2.2
YEJ160M2-2	15	YEJ180L-4	22	YEJ132M-8	3
YEJ160L-2	18.5	YEJ200L-4	30	YEJ160M1-8	4
YEJ180M-2	22	YEJ225S-4	37	YEJ160M2-8	5.5
YEJ200L1-2	30	YEJ225M-4	45	YEJ160L-8	7.5
YEJ200L2-2	37	YEJ90S-6	0.75	YEJ180L-8	11
YEJ225M-2	45	YEJ90L-6	1.1	YEJ200L-8	15
YEJ801-4	0.55	YEJ100L-6	1.5	YEJ225S-8	18.5
YEJ802-4	0.75	YEJ112M-6	2.2	YEJ225M-8	22
YEJ90S-4	1.1	YEJ132S-6	3		

制动器技术数据 Technical data of braker

机座号 Motor size	静制动转矩 Rated Brake Torque(N.m)	空载制动时间 Release time(s) 开关在直流侧断 DC side off	制动器电压 Voltage(V)	励磁功率 Power(W)
80	7.5	0.20	99	50
90	15	0.20	99	60
100	30	0.20	99	80
112	40	0.25	170	110
132	75	0.25	170	130
160	150	0.35	170	150
180	200	0.35	170	150
200	300	0.45	170	200
225	450	0.45	170	200

安装及外形尺寸: 同YD系列(IP44)三相异步电动机(除长度外)

Dimensions of mounting and contour: Same as YD series (IP44) except for length.