

TDG50

TDG50 is a lightweight, portable, line boring machine, it can be adapted to variety of the narrow space, high-altitude complex processing needs. It combines our more than 15 years of experience on site engineering service, advanced industry design concept and field boring capability.

Lightweight construction, performance excellence

Gearbox System –Integrated rotation drive unit and auto feed unit together creatively, only 9.5KG, more portable, step less Speed regulation range 0 to 0.5mm, easily achieve the forward and reverse exchange.

Easy Set Up–Equipped with 3 legs mount kit, which can be adjusted to different angle, to meet different holes.

Measuring tools–Equipped with bore cutter measuring tool and diameter measuring ruler.

Superior scalability

- Optional one smaller boring bar to achieve boring diameter Ø38-300mm.
- Optional facing head, to achieve face processing of pipe and flanges.
- Optional bore welder used for integrated line boring and welding system.

Application

This machine with powerful machining capacity which widely service for many fields, repairing holes in heavy construction equipment, such as cranes, excavators, bulldozers, tractors, back holes etc.

Technical Data

Model	TDG50	TDG50PLUS
Boring Dia	55-300mm	38-300mm
Boring Stroke	280 mm	
Feed Rate	0-0.5mm/rev	
Bar rpm	0-49/0-98	
Boring Bar	Ø50*1828mm	Ø50*1828mm Ø35*1200mm
Shipping Weight	98KG	125KG



On-Site Test Data

Diameter	Ø80	Ø300
Depth of Cut	5mm	1.5mm
Feed Rate	0.18mm/rev	0.20mm/rev
Bar Rpm	32	78
Cutter	HSS tool bit	Inserted tool holder

- Material:Q345.

E-mail:sales@dthmachines.com 


Web:www.dthmachines.net 

Tel:+86-755-33238068 Fax: +86-755-33238950 

Address:Lantian industrial Park Haoxiang Road Shajing Town Shenzhen.PRC 



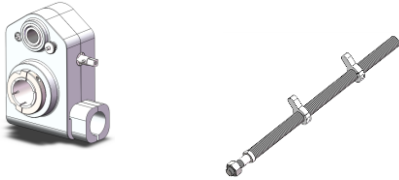
 **HongKong Branch: Dthmachines(Hongkong)Limited**

 Address: Unit 13, 23rd Floor, Cable TV Tower, 9 Hoi Shing Road, Tsuen Wan, Hong Kong

Select Configuration

» Drive Gearbox (102011)

- Mechanical feed, feed rate:0-0.5mm/rev
- Can be mounted anywhere on the bar



» Lead Screw

- 280mm Feed stock (102030)

» Drive Motor

Made in Germany, Eibenstock, 2 bar speeds, 0-49& 0-98rpm, weight: 4.6kg.

- Single phase, 110V, 50/60Hz, 1250W(103131)
- Single phase, 230V, 50/60Hz, 1250W(103132)



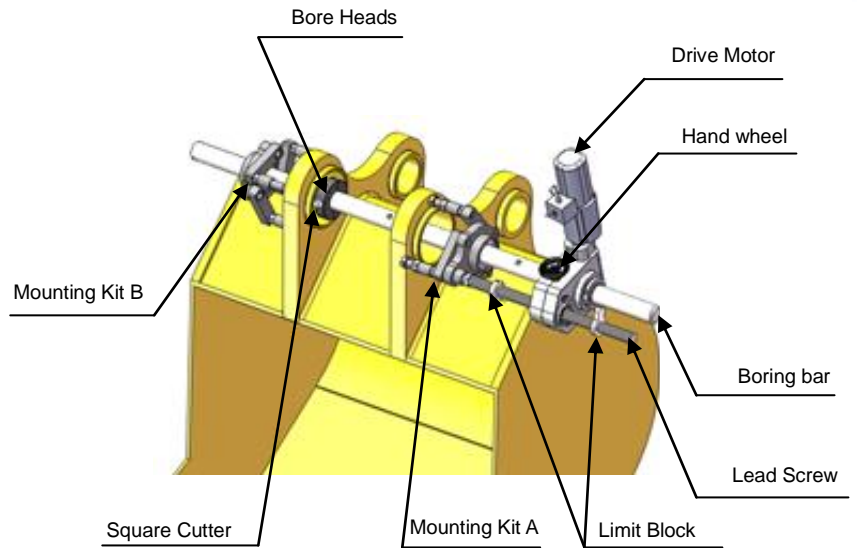
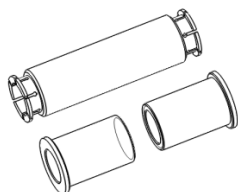
» Boring Bar

- All bars are made of 42CrMo chrome-plated steel.
- Tooling hole spaced every 200mm.

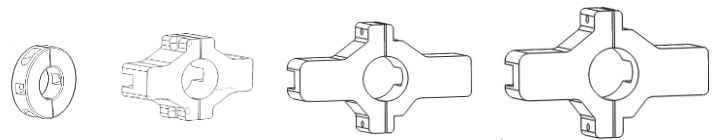
Bar Dia	Bar Length	Hole Size	Code
50	1200	16	102061
50	1828	16	102062
35	1200	12	102063
35	1828	12	102064

» Reduction Sleeve

- Fit to Ø35mm bar.
- Includes: 1 Drive Gearbox sleeves(102151)
2 Bearing sleeves(102152).



» Bore Heads(102050)



- Fit to Ø50mm bar.
- 16*16mm square cutter.
- Boring diameter: Ø120-165mm\Ø150-230mm.
Ø200-280mm\Ø250-300mm.

» Mounting Kit

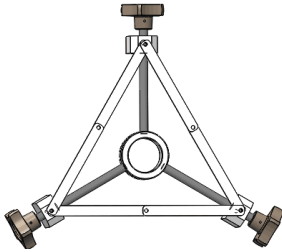
- Boring range: 55-300mm.
- Support of machines complete with brackets to knee.
- Mounting Kit B with spherical bearings.(102110)



Mounting Kit B

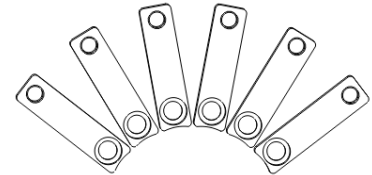
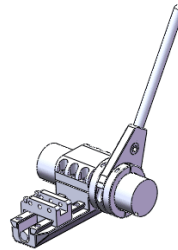
»» **Rapid Centering System (102070)**

- Magnet mounting, Max control range:350mm.
- 2 pcs for centering boring bar.
- Adjusting sleeve: 50mm/35mm.



»» **Facing Head**

- only fit to Ø50mm bar(102010).
- 16*16mm square cutter.
- Facing diameter: 80-380mm
- Using facing head to machining face the extension block are required to achieve rotating space.



»» **Cutter Measuring Tool**

- Digital calipers.
- Used to measuring cutting tool out the Length of boring bar.

Model	Code
Fit to 35mm bar	102081
Fit to 50mm bar	103082



ON SITE APPLICATION



»» **Bore Measuring Tool**

- Digital calipers(102091).
- Metric and Inch scale readouts.
- Measurement:10-300mm.

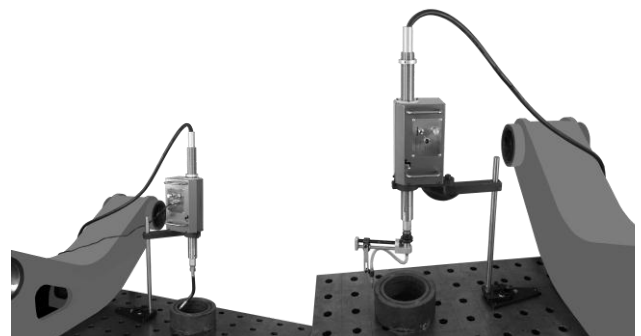


»» **Tool Kit**

HSS tool bit ,12*12*38mm	1041401
HSS tool bit ,16*16*50mm	1041402
HSS tool bit ,12*12*200mm	1041404
HSS tool bit ,16*16*200mm	1041405
16mm inserted tool holder,lh,90°	1041407
Carbide tips	104140

»» **Auto Bore Welder**

Model	ID Weld Range	Weld Stroke	O.D. Weld Range	Face Welding Range
BW350	40-450mm	208mm	NO	NO
BW360	40-600mm	400mm	20-750mm	20-610mm



Standard Equipment

TDG50 LINE BORING

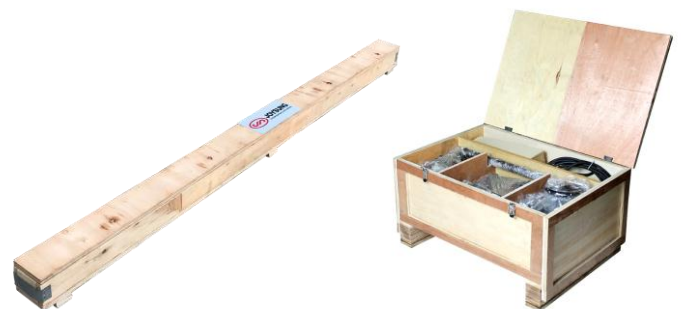
Code	Description	Qty
102062	Boring Bar : Ø50*1828mm	1
102011	Drive Gearbox	1
102090	Handwheel	1
102030	Lead Screw	1
102130	Power Unit	1
102100	Mounting Kit A	1
102110	Mounting Kit B	1
102070	Rapid Centering System	2
102050	Bore Heads	4
102080	Cutter Measuring Tool	1
102091	Bore measuring tool	1
1041407	16mm inserted tool holder	1
1041402	16 HSS tool bit,L:50mm	1
102170	Tool Pack	1
102180	Shipping Box	2

TDG50 PLUS LINE BORING

Code	Description	Qty
102062	Boring Bar : Ø50*1828mm	1 Pcs
102063	Boring Bar : Ø35*1200mm	1 Pcs
102011	Drive Gearbox	1 Set
102190	Hand wheel	1 Pcs
102030	Lead Screw	1 Pcs
102040	Limit block	2 Pcs
102130	Power Unit	1 Pcs
102100	Mounting Kit A	1 Set
102110	Mounting Kit B	1 Set
102070	Rapid Centering System	3 Pcs
102150	Reduction Sleeve	3 Pcs
102050	Bore Heads	4 Pcs
102081	Cutter measuring tool:35mm	1 Pcs
103082	Cutter measuring tool:50mm	1 Pcs
1041407	16mm inserted tool holder	1 Pcs
1041402	16 HSS tool bit,L:50mm	1 Pcs
1041401	12 HSS tool bit,L:38mm	1 Pcs
102170	Tool Pack	1 Set
102180	Shipping Box	2 Pcs

EXTRA KITS

Code	Description	Qty
103121	Facing Head	
104161	BW350 Auto Bore Welder	
104162	BW360 Auto Bore Welder	



Dear Friends:

Many thanks for your attention and we are honored to introduce you when selecting boring machine, and we look forward to a great cooperation with you!

The above configuration list is recommended by JOYSUNG, if the configuration cannot meet your requirements please tell us: sales@dthmachines.com, thank you!