



Company Profile

Thanks for your use or future use of LAPAR series products and your attention to LAPAR.

LAPAR, headquartered in Milan, Italy, is one of international brands in the field of fluid control. With a history of 30 years and more, LAPAR has received broad recognition from global customers with complete network system, outstanding product quality and integrated customer solutions.

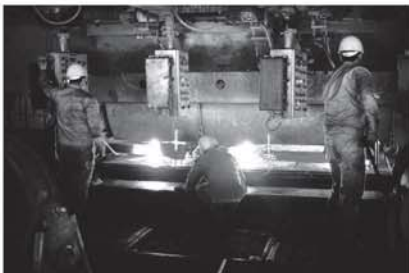
In 2005, LAPAR entered into Chinese market and authorized Shanghai Lapar Control Valve Co., Ltd. (hereinafter referred to as Shanghai LAPAR) to work as an agent of LAPAR products. Later, assembly and testing parts of LAPAR product production line were introduced to Shanghai LAPAR. Currently, Shanghai LAPAR has obtained production authorization from LAPAR and successively introduced systematic LAPAR product production lines and become an Asian headquarters of global network system of LAPAR, responsible for LAPAR's affairs in the Asian-Pacific region.

Currently, LAPAR has formed a product pattern in the Asian-Pacific regions, involving over 20 series, such as butterfly valve, ball valve, control valve, stop valve, gate valve and check value. LAPAR strictly carries out quality standard systems, such as ISO, API, ANSI, DIN and GB. Products are widely used in such industries as environmental protection, machinery, power, petroleum, air separation, chemical, food and medicine and sales network covers 32 provinces and cities of China and each country in Southeast Asia.

Adhering to LAPAR's corporate concept of "Quality first, credit standing paramountcy, service oriented, pursuit of excellence", Shanghai LAPAR follows LAPAR's integrated solutions and provides overall services before, during and after sales, including design, model selection, manufacturing, service, installation, maintenance and instruction.

At present, Shanghai LAPAR retains elites of the former Chinese team of LAPAR and actively conducts cooperation with universities to train new technological talent and continuously optimizes product structure, improves technological content and keeps improving relying on technological innovation.

There is no best but better. Your demand is our eternal pursuit.



企业简介

感谢你正在或即将使用LAPAR系列产品，感谢你关注LAPAR!

LAPAR，流体控制领域的国际品牌之一，总部位于意大利米兰，成立30多年来，LAPAR凭借其完善的网络体系、优秀的产品质量、一体式的客户解决方案赢得全球客户的广泛赞誉。

2005年LAPAR进入中国市场，授权上海蓝帕控制阀门有限公司（以下简称上海蓝帕）代理LAPAR产品，随后将LAPAR产品生产线上组装、测试部分引入上海蓝帕。现在上海蓝帕已经获得LAPAR生产授权，成功引入系统的LAPAR产品生产线，成为LAPAR全球网络体系的亚洲总部，负责处理LAPAR亚太事务。

今天，LAPAR在亚太已经形成了包含蝶阀、球阀、调节阀截止阀、闸阀、止回阀等二十多个系列的产品格局，严格执行ISO、API、ANSI、DIN、GB等质量标准体系，产品广泛运用在环保、机械、电力、石油、空分、化工、食品、医药等行业，销售网络覆盖了中国的32个省市和东亚及南亚各国。

上海蓝帕秉承LAPAR “Quality first, credit standing paramountcy, service oriented, pursuit of excellence” 的企业理念，传承LAPAR一体式解决方案，提供包括设计、选型、制造、服务安装、维护、指导在内的涵盖售前售中售后三个阶段的全过程全方位服务。

今天的上海蓝帕仍保留了原意大利LAPAR中国团队的精英并积极开展校企合作，培养新的技术人才，依靠科技创新，不断优化产品结构，提升技术含量，精益求精。

没有最好，只有更好！你的需求是我们永恒的追求。



目录 Contents



01 公司简介 Company Profile

02 目录 Contents



A

塑胶蝶阀 LPD12-
Plastic Butterfly Valve

04 设计特性 Design Feature

05 对夹式 Wafer

06 支耳式 Multihole Type



B

塑胶球阀 LPD11-
Plastic Ball Valve

08 设计特性 Design Feature

09 尺寸 Size

10 三通尺寸+流向 Three-way Size & Flow



C

塑胶隔膜阀 LPE11-
Plastic Diaphragm Valve

12 MK设计特性 Design Feature

13 MK外型尺寸 Size

14 VM设计特性 Design Feature

15 VM外型尺寸 Size

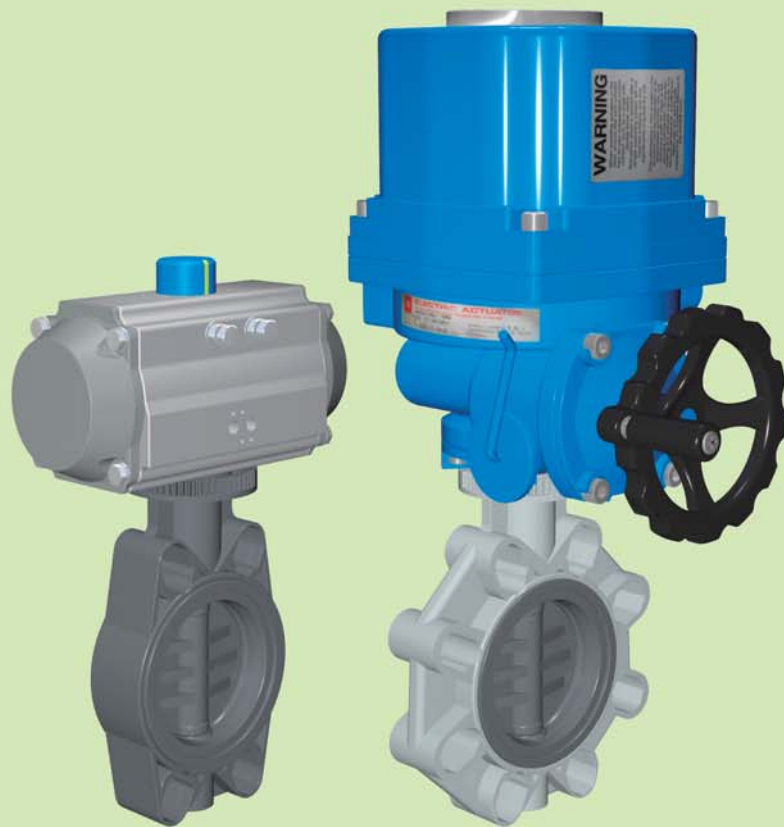
16 MV设计特性 Design Feature

17 MV外型尺寸 Size

LAPAR

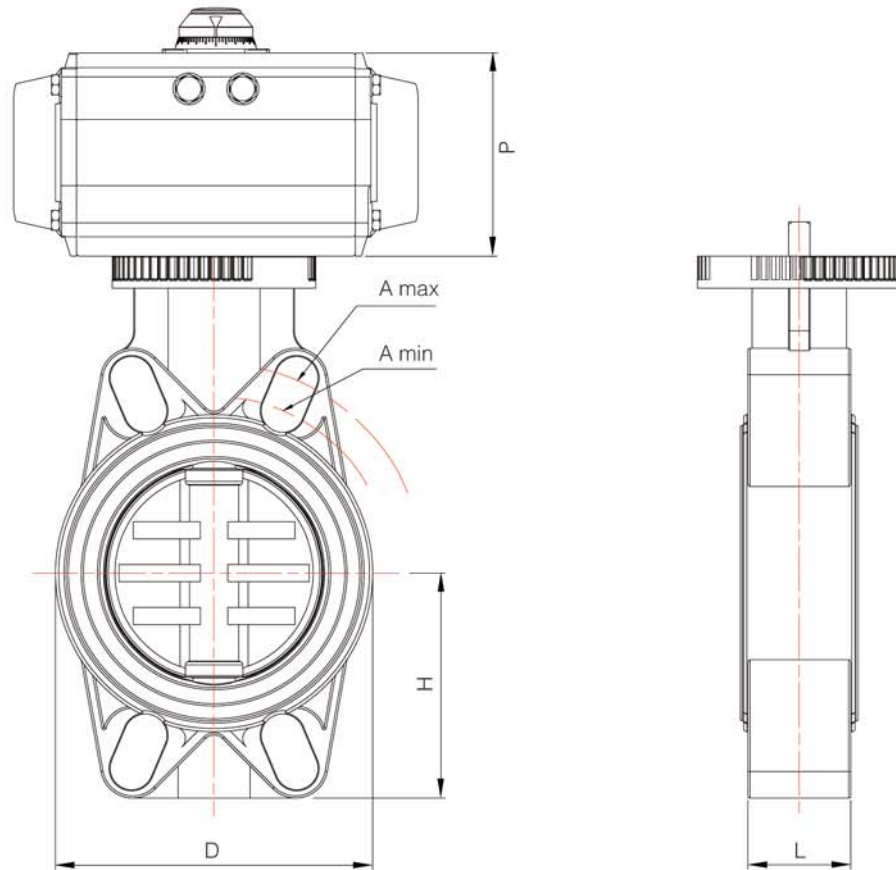
塑胶蝶阀 LPD12-

Plastic Butterfly Valve





对夹式 Wafer



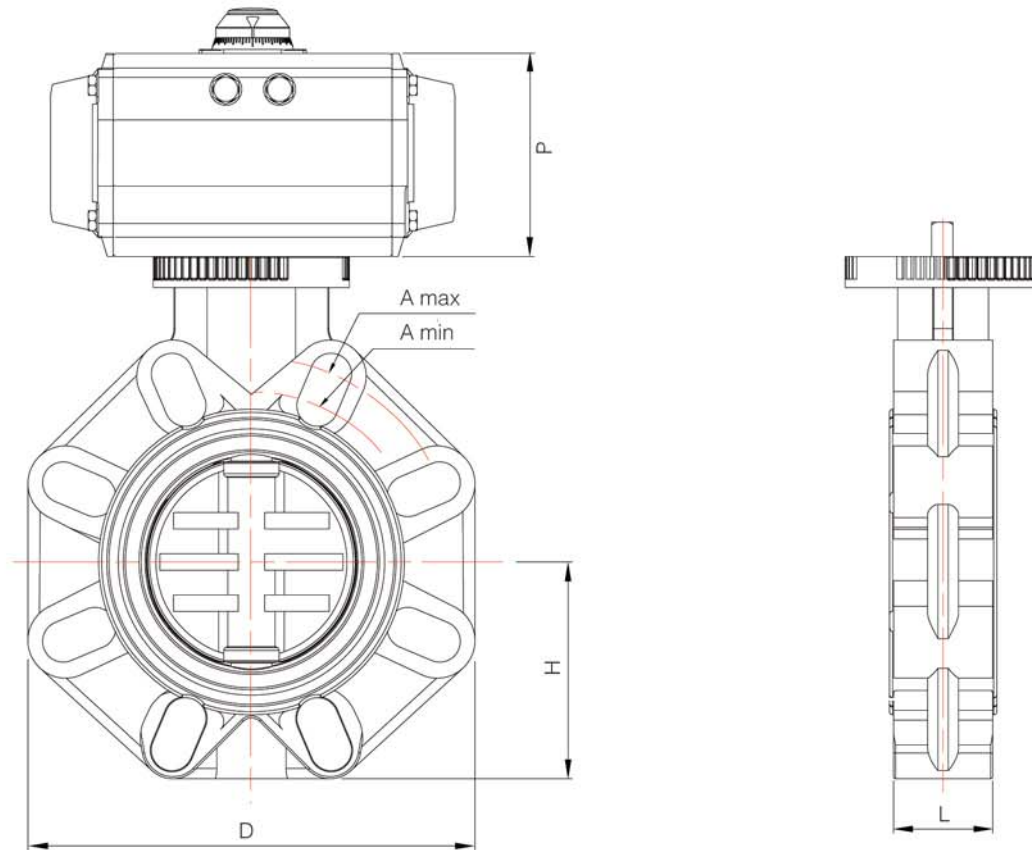
- P: 请参考执行器配置表
Please refer to the actuator configuration table

Unit:mm

SIZE	L	D	A min.	A max.	H	ISO 5211
DN40	1-1/2"	33	60	93.5	109	F05
DN50	2"	43	70	108	124	F05
DN65	2-1/2"	46	80	128	144	F05-F07
DN80	3"	49	80	145	159	F07
DN100	4"	56	105	165	190	F07
DN125	5"	64	121	204	215	F07
DN150	6"	70	132	230	242	F07
DN200	8"	71	161	280	298	F07



支耳式 Multihole Type



• P: 请参考执行器配置表
Please refer to the actuator configuration table

Unit:mm

SIZE	L	D	A min.	A max.	H	ISO 5211	
DN40	1-1/2"	33	132	99	109	60	F05
DN50	2"	43	147	115	125.5	70	F05
DN65	2-1/2"	46	165	128	144	80	F05-F07
DN80	3"	49	185	145	160	93	F07
DN100	4"	56	211	165	190	107	F07
DN125	5"	64	240	204	215	120	F07
DN150	6"	70	268	230	242	134	F07
DN200	8"	71	323	280	298	161	F07

LAPAR

塑胶球阀 LPD11-
Plastic Ball Valve





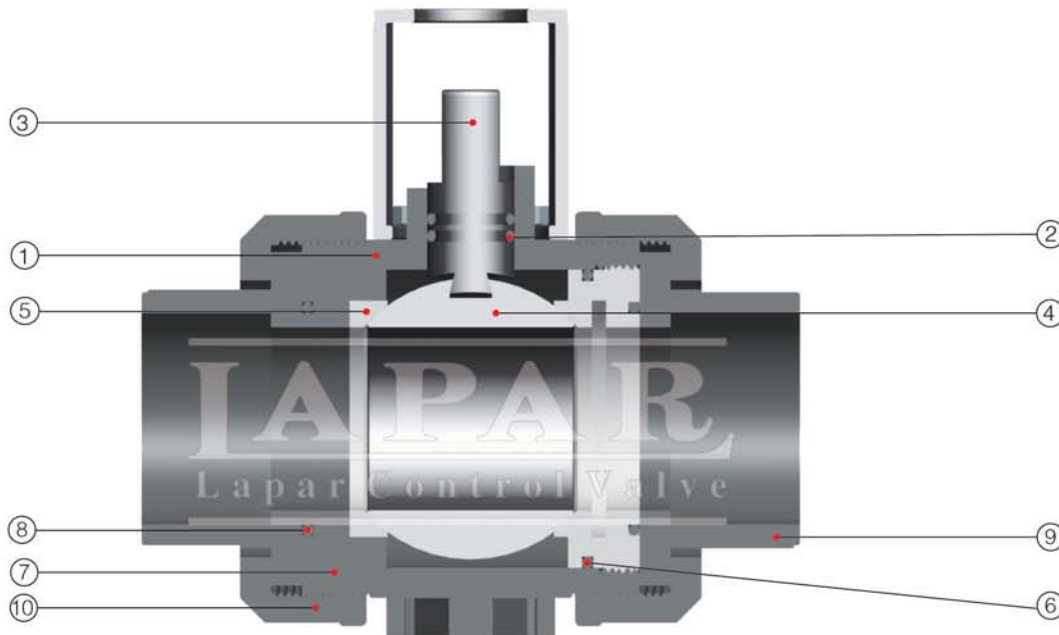
塑胶球阀 LPD11-

Plastic Ball Valve



阀类代号 Code	执行机构 Actuator	作用形式 Action	出厂状态 Air Fail Position	控制方式 Control	结构形式 Structure	阀体材质 Body Material	密封材质 Sealing Material	阀芯材质 Disc Material	连接方式 Connection	口径 DN	压力 PN
LPD11-	1 气动 Pneumatic 2 气动+手轮 Pneumatic & Handwheel 3 电动 DC24V Electric 4 电动 AC220V Electric 5 电动 AC380V Electric 7 手柄 Handle 8 涡轮 Turbine 0 其它 Others	D 双作用 Double-acting S 单作用 Single-acting 0 其它 Others	1 常开 Normally Open 2 常闭 Normally Closed 3 无固定 Flexible 4 保位 Hold 0 其它 Others	A 开关型 On-off B 调节型 Control C 智能型 Intelligent 0 其它 Others	5 一体式 One-piece 8 三通L Three-way L 9 三通T Three-way T 0 其它 Others	F UPVC G CPVC H PP 0 其它 Others	P PTFE 0 其它 Others	F UPVC G CPVC H PP 0 其它 Others	1 法兰 Flange 3 内螺纹 Thread 7 由令 Union 0 其它 Others	 	

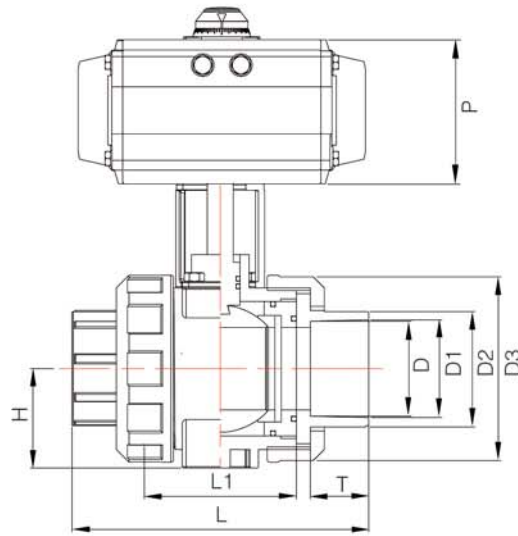
设计特性 Design Feature



NO.	零件 Part	材质 Material
1	阀体 Body	UPVC, CPVC, PP, PVDF, ABS
2	阀杆O型圈 Stem O-ring	EPDM, FPM
3	阀杆 Stem	UPVC, CPVC, PP, PVDF, ABS
4	阀球 Ball	UPVC, CPVC, PP, PVDF, ABS
5	阀座 Seat	PTFE
6	O型垫圈 Carrier O-ring	EPDM, FPM
7	阀座垫圈 Seat Carrier	UPVC, CPVC, PP, PVDF, ABS
8	由令O型圈 Union O-ring	EPDM, FPM
9	终端接头 End Connector	UPVC, CPVC, PP, PVDF, ABS
10	由令螺母 Union Nut	UPVC, CPVC, PP, PVDF, ABS



由令 Union

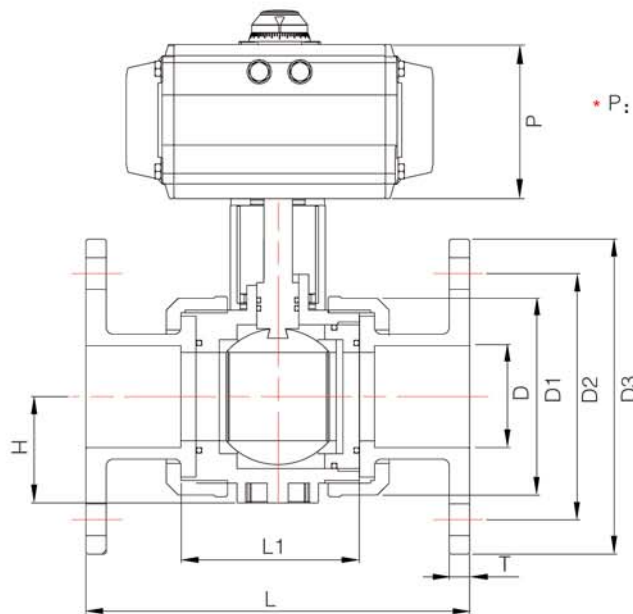


* P: 请参考执行器配置表
Please refer to the actuator configuration table

Unit:mm

SIZE	L	L1	D	D1	D2	D3	T	H
DN15 1/2"	112	60	20.1	20.3	31	45	16	72
DN20 3/4"	132	73	25.1	25.3	37	55	19	88
DN25 1"	144	78	32.1	32.3	44	66	22	105
DN32 1-1/4"	167	87	40.1	40.3	54	82	26	131
DN40 1-1/2"	172	92	50.1	50.3	65	98	31	156
DN50 2"	206	112	63.1	63.3	79	120	38	192
DN65 2-1/2"	273	136	75.1	75.3	92	140	44	224
DN80 3"	303	158	90.1	90.3	108	163	51	256
DN100 4"	333	176	110.1	110.4	146	225	61	360

法兰 Flange



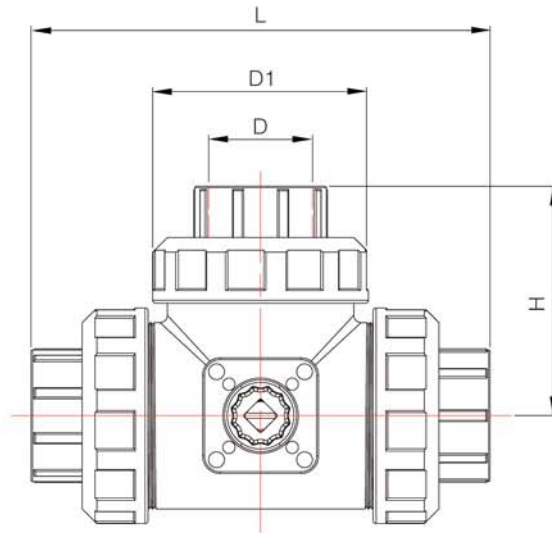
* P: 请参考执行器配置表
Please refer to the actuator configuration table

Unit:mm

SIZE	L	L1	D	D1	D2	D3	T	H
DN15 1/2"	130	60	13	45	65	95	13	20.5
DN20 3/4"	150	73	18	55	75	105	14	26
DN25 1"	160	78	23	66	85	115	14	33
DN32 1-1/4"	180	87	30	82	100	140	16	38
DN40 1-1/2"	200	92	38	98	110	150	16	42
DN50 2"	230	112	48	120	125	165	16	53
DN65 2-1/2"	290	135	61	140	145	185	18	-
DN80 3"	310	156	69	160	163	200	18	-
DN100 4"	350	176	100	225	180	220	18	-



三通尺寸 Three-way Size

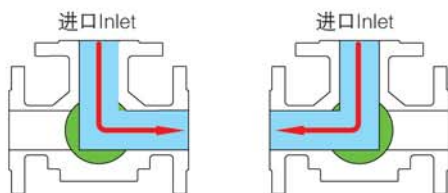


Unit:mm

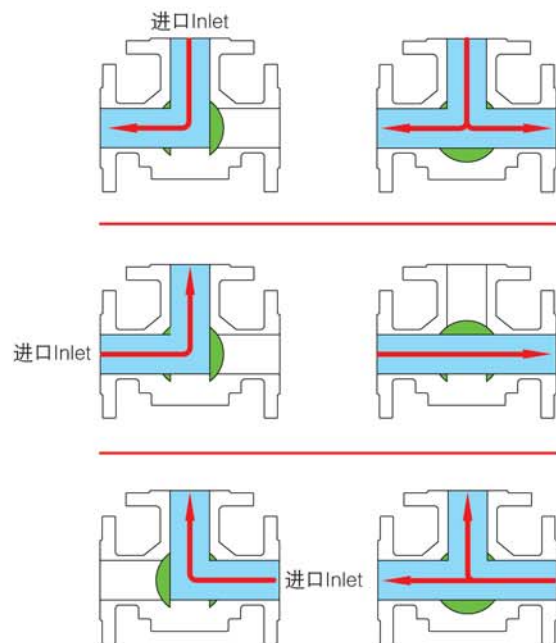
SIZE		L	D	D1	H
DN10	3/8"	117	16	55	58.5
DN15	1/2"	117	20	55	58.5
DN20	3/4"	144	25	66	72
DN25	1"	158	32	75	79
DN32	1-1/4"	183.5	40	87	91.75
DN40	1-1/2"	219	50	100	109.5
DN50	2"	266.5	63	122	133.25

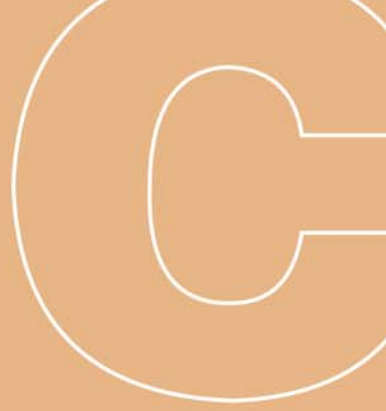
流向示意图 Flow

三通L型 Three-way L



三通T型 Three-way T

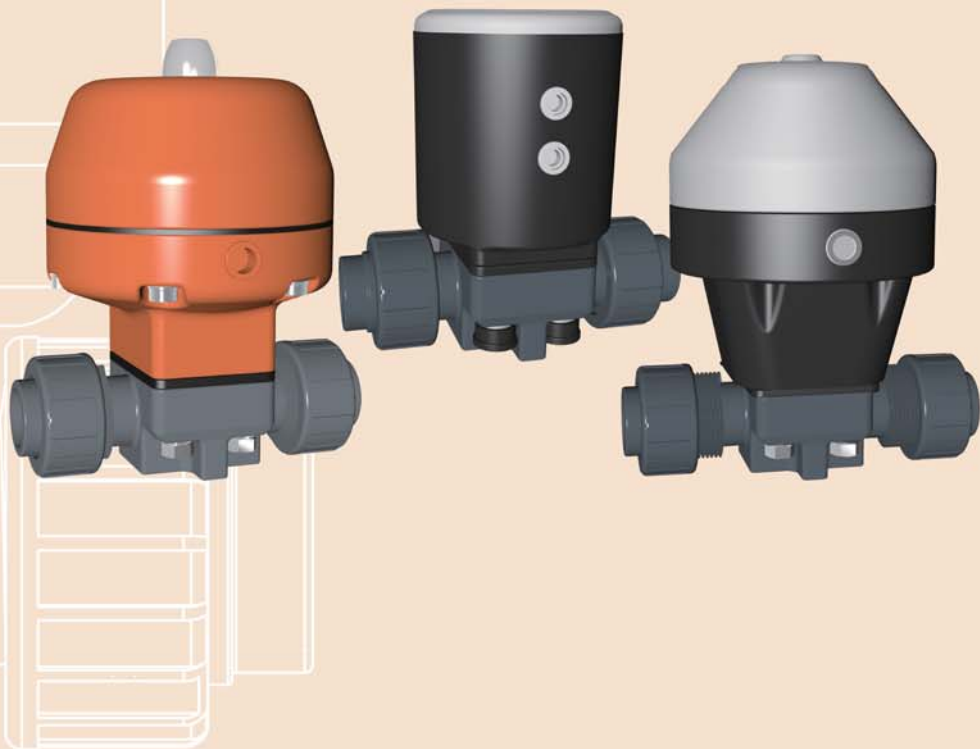




LAPAR

塑膠隔膜閥 LPE11-

Plastic Diaphragm Valve





塑胶隔膜阀 LPE11- Plastic Diaphragm Valve



阀类代号 Code	执行机构 Actuator	作用形式 Action	出厂状态 Air Fail Position	控制方式 Control	结构形式 Structure	阀体材质 Body Material	膜片材质 Diaphragm	膜头材质 Actuator	连接方式 Connection	口径 DN	压力 PN
LPE11-	1 气动 Pneumatic 8 涡轮 Turbine 0 其它 Others	D 双作用 Double-acting S 单作用 Single-acting 0 其它 Others	1 常开 Normally Open 2 常闭 Normally Closed 3 无固定 Flexible 4 保位 Hold 0 其它 Others	A 开关型 On-off B 调节型 Control 0 其它 Others	5 一体式 One-piece 0 其它 Others	F UPVC G CPVC H PP V PVDF 0 其它 Others	U FPM O EPDM N NBR P PTFE 0 其它 Others	E QT H PP 0 其它 Others	1 法兰 Flange 7 由令 Union		

设计特性 Design Feature



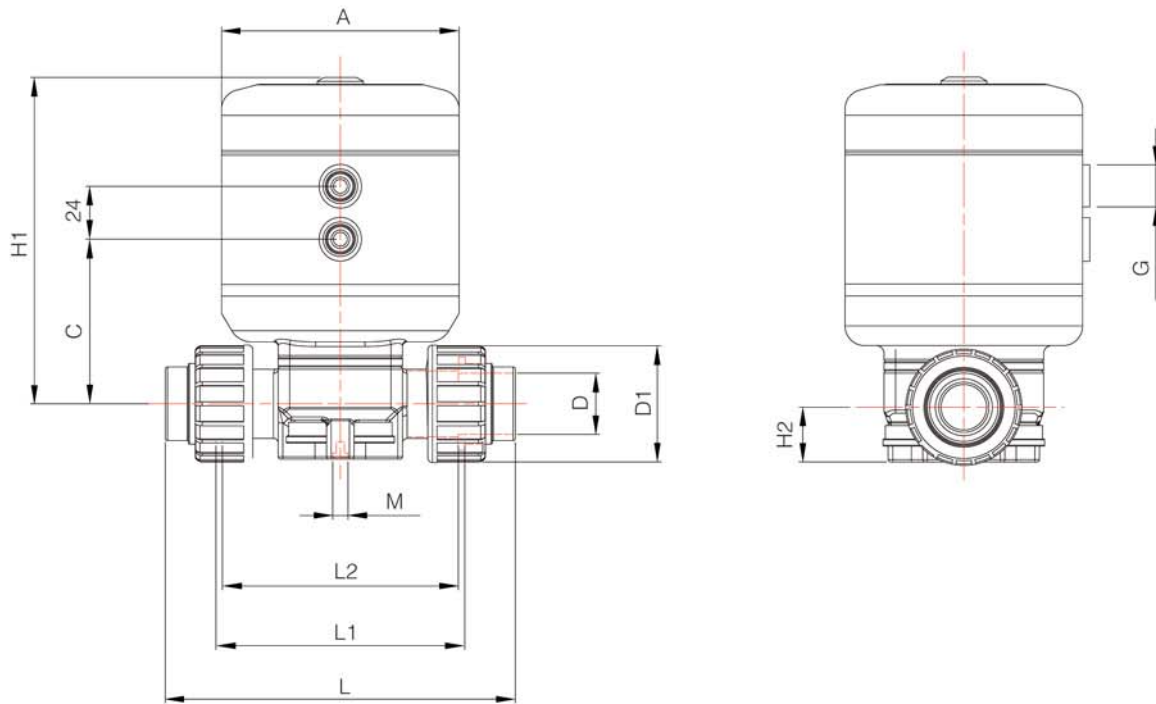
NO.	零件 Part	材质 Material
1	堵头 Plug	PP
2	执行器上盖 Actuator-upper Part	PA
3	弹簧 Spring	Carbon Steel
4	弹簧 Spring	Carbon Steel
5	弹簧 Spring	Carbon Steel
6	O型圈 O-ring	NBR
7	活塞 Piston	PA
8	密封 Seal	NBR
9	垫片 Washer	Brass
10	方型垫片 Quad-ring	NBR
11	执行器下盖 Actuator-lower Part	PA
12	螺纹堵头 Threaded Plug	PA
13	轴承 Spindle bearing	Metal/PTFE
14	上轴承 Upper spiggle	Stainless Steel
15	O型圈 O-ring	NBR
16	下轴承 Lower Spiggle	Stainless Steel
17	销钉 Pin	Stainless Steel
18	连接轴 Coupling	Stainless Steel
19	堵头 Plug	PP
20	压片 Compressor	PA
21	密封膜片 Sealing Diaphragm	EPDM,FPM,NBR,CSM,PTFE
22	阀体 Body	U-PVC,PVC-C,PP,PVDF,ABS
23	垫片 Washer	Zincplated Steel
24	六角螺栓 Hexagonal Screw	Zincplated Steel
25	堵头 Plug	PE



塑胶隔膜阀 LPE11-
Plastic Diaphragm Valve



MK系列 MK Series

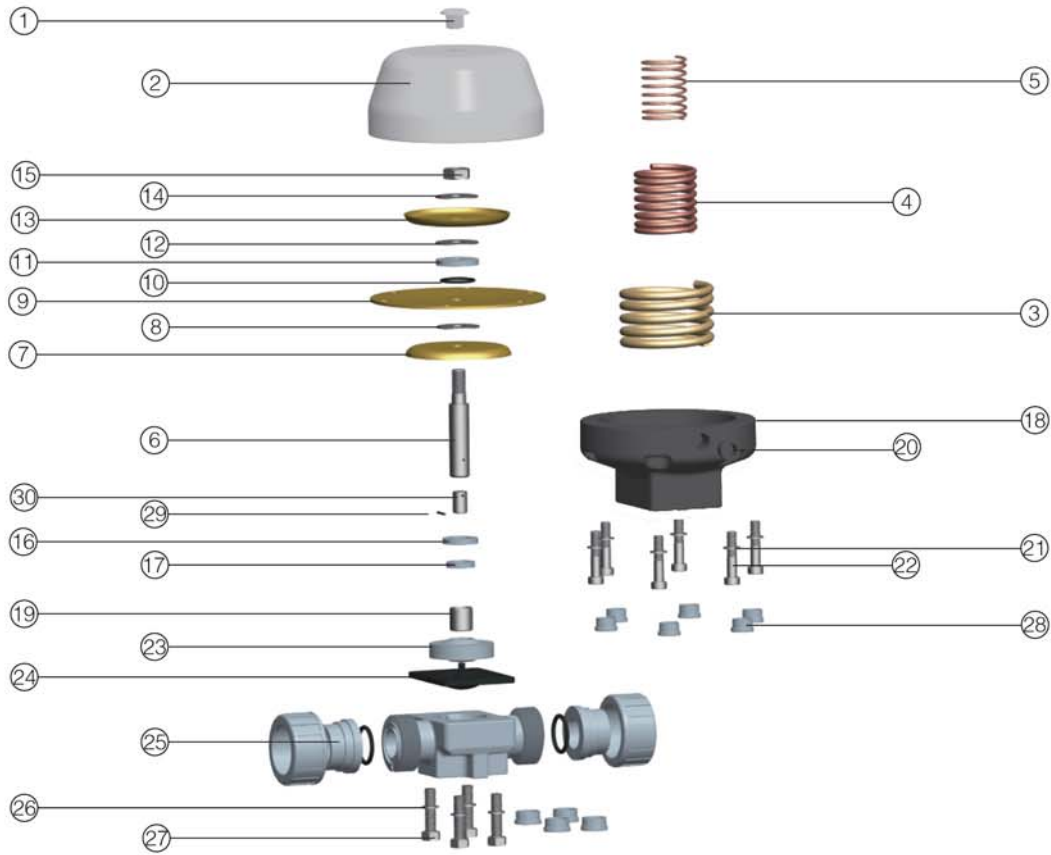


Unit:mm

DN	PN	L	L1	L2	D	D1	H1	H2	M	A	C	G
15	10	147	114	108	20	41	144	26	M6	95	89	1/4"
20	10	154	116	108	25	50	144	26	M6	95	89	1/4"
25	10	168	121	116	32	58	144	26	M6	95	89	1/4"
32	10	192	142	134	40	72	171	40	M8	114	103	1/4"
40	10	222	162	154	50	79	171	40	M8	114	103	1/4"
50	10	266	194	184	63	98	216.5	40	M8	144	145	1/4"



设计特性 Design Feature



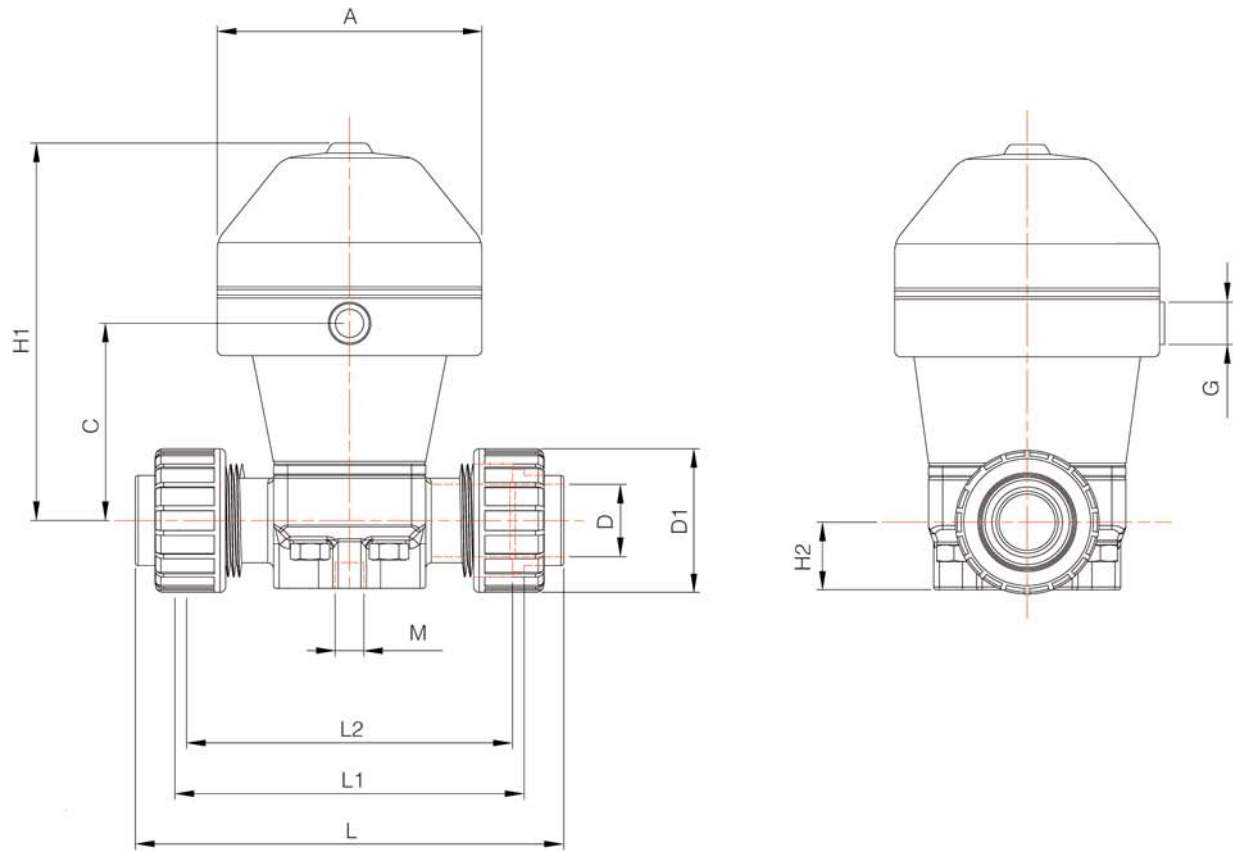
NO.	零件 Part	材质 Material
1	堵头 Plug	PP
2	执行器上盖 Atuator-upper Part	PP/Glass
3	弹簧 Spring	Carbon Steel
4	弹簧 Spring	Carbon Steel
5	弹簧 Spring	Carbon Steel
6	轴承 Spindie	Stainless Steel
7	隔膜压盘 Press Diaphragm-plate	Zincplatrd Steel
8	垫片 Washer	NBR
9	控制膜片 Control Diaphragm	CR
10	O型圈 O-ring(DN32-50)	NBR
11	隔离垫圈 Spacer Ring (DN32-50)	Zincplatrd Steel
12	垫片 Washer	NBR
13	隔膜压盘 Press Diaphragm-plate	Zincplatrd Steel
14	垫片 Washer	Zincplatrd Steel
15	锁定活接 Locknut	Zincplatrd Steel
16	安全垫片 Security Washer	Brass
17	方型垫圈 Quad-ring	NBR
18	执行器下盖 Atuator-lower Part	PP/Glass
19	轴承 Spindie bearing	Metal/PTFE
20	堵头 Plug	PE
21	垫片 Washer	Zincplatrd Steel
22	筒型螺钉 Cylindrical Screw	Zincplatrd Steel
23	压片 Compressor	PBTP
24	密封膜片 Sealing Diaphragm	EPDM,FPM,NBR,CSM,PTFE
25	阀体 Body	PVC,PVC-C,PP,PVDF,ABS
26	垫片 Washer	Zincplatrd Steel
27	六角螺钉 Hexagonal Screw	Zincplatrd Steel
28	堵头 Plug	PE
29	销钉 Pin	Stainless Steel
30	连接轴 Couping	Stainless Steel



塑胶隔膜阀 LPE11-
Plastic Diaphragm Valve



VM系列 VM Series

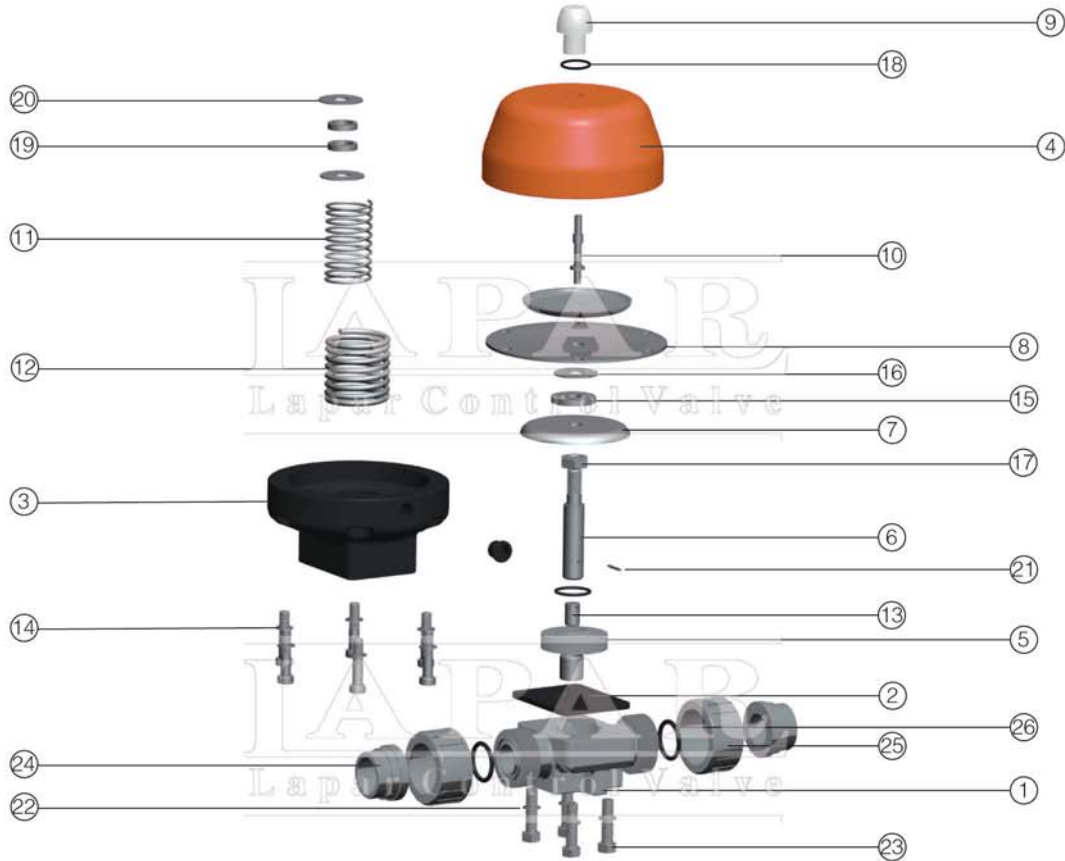


Unit:mm

DN	PN	L	L1	L2	D	D1	H1	H2	A	M	C	G
15	10	147	115	108	20	41	175	26	126	M6	66	1/4"
20	10	154	116	108	25	50	175	26	126	M6	66	1/4"
25	10	168	124	116	32	58	175	26	126	M6	66	1/4"
32	10	192	140	134	40	72	244	40	155	M8	103	1/4"
40	10	222	160	154	50	79	244	40	155	M8	103	1/4"
50	10	266	190	184	63	98	292	40	210	M8	125	1/4"



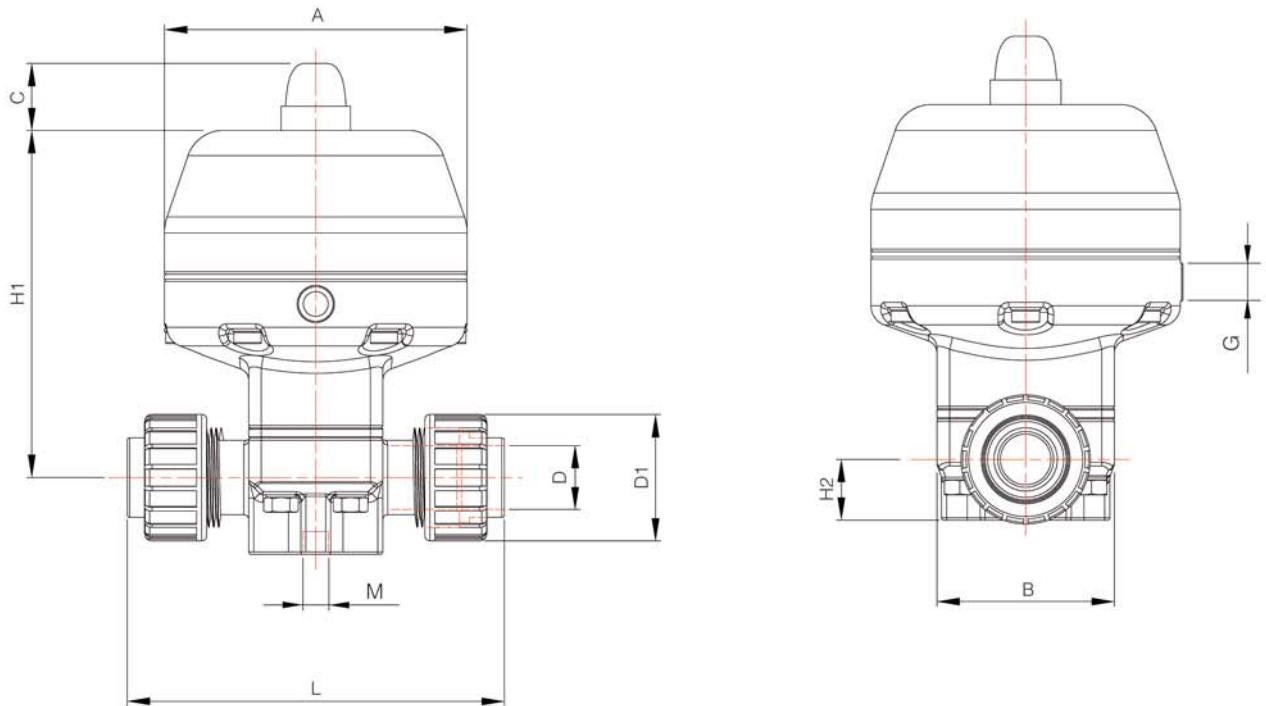
设计特性 Design Feature



NO.	零件 Part	材质 Material
1	阀体 Body	PVC,PVC-C,PP,PVDF,ABS
2	密封膜片 Sealing Diaphragm	Diap
3	执行器下盖 Atuator-lower Part	Hou
4	执行器上盖 Atuator-upper Part	Hou
5	压片 Compressor	EPDM,FPM,NBR,CSM,PTFE
6	轴承 Spindie	Driving Shaft
7	隔膜压盘 Press Diaphragm-plate	Disc
8	膜片 Diaphragm	Diaphragm
9	上盖 Cap	Cap
10	调节螺栓 Adjustment Screw	Adjustment Screw
11	弹簧 Spring	Pressure Spring
12	弹簧 Spring	Pressure Spring
13	连接轴 Couping	Banjo Bolt
14	六角螺栓 Socket Head Cap Screw	Socket Head Cap Screw
15	U型垫片 U-washer	U-washer
16	垫片 Washer	Circlip
17	O型圈 O-ring	NBR
18	O型圈 O-ring	NBR
19	O型圈 O-ring	NBR
20	六角螺母 Hexagonal Nut	Hexagonal Nut
21	销钉 Pin	Clamping Sleeve
22	U型垫片 U-washer	U型垫片 U-washer
23	六角螺栓 Hexagonal Screw	Hexagonal Screw
24	由令 Union	Union Nut
25	承插件 Insert	Insert
26	O型圈 O-ring	O-ring



MV系列 MV Series



Unit:mm

DN	L			D	D1			G	H1		C		A	B	M	H2
	PVC-U/C	PP	PVDF		PVC-U/C	PP	PVDF		NC	NO/DA	NC	NO/DA				
15	128	125	128	20	41	46	47	1/4"	136	47	29	41	122	72	M6	26
20	152	146	150	25	50	50	57	1/4"	136	57	29	41	122	72	M6	26
25	166	158	162	32	58	66	64	1/4"	175	64	29	41	152	92	M6	26
32	192	181	184	40	72	79	78	1/4"	175	78	29	41	152	92	M8	40
40	222	207	210	50	79	87	89	1/4"	207	89	41	41	192	119	M8	40
50	226	244	248	63	98	107	109	1/4"	207	109	41	41	192	119	M8	40
65	-	-	-	75	-	-	-	1/4"	325	305	-	-	258	-	M12	55
80	-	-	-	90	-	-	-	1/4"	325	305	-	-	258	-	M12	55
100	-	-	-	110	-	-	-	1/4"	355	330	-	-	258	-	M12	64

选择蓝帕 “阀” 现价值
It's worth to choose Lapar

意大利蓝帕亚洲总部
上海蓝帕控制阀门有限公司

地址：上海市奉贤区金汇镇金碧路666号

Add: NO.666Jinbi Rd,Jinhui Town Fengxian District,Shanghai

P.c: 201404

Tel: +86 21-64423400 54823610 64966087 64961744

Fax: +86 21-64961482

Http: //www.lapar-valve.com

E-mail: lp@lapar-valve.com



◎ 本手册如有更正，恕不另行通知，解释权归本公司。
This manual for correct, without notice, interpretation of the company.

♻️ 本产品手册采用生态纸印刷。
The product manual with ecological paper printing.